

BASIC FITTING GUIDE

FOR



ARMY SERVICE UNIFORMS (ASU)

MEN/WOMEN

Program Manager – Soldier Clothing and Individual Equipment
June 2010

Table of Contents

SECTION 1:	Men Army Service Uniforms
APPENDIX A:	Men Size Prediction Charts
APPENDIX B:	NSNs for Men's Items
SECTION 2:	Women Army Service Uniforms
APPENDIX C:	Women Size Prediction Charts
APPENDIX D:	NSNs for Women's Items
APPENDIX E:	Suggested Sources

MEN'S UNIFORM ITEMS

SECTION 1

FITTING OF MEN'S UNIFORMS

The Men's Army Service Uniform (ASU) is composed of an Army Blue 450 Coat and Army Blue 451 Trousers, an Army White 521 Long or Short Sleeve Shirt, necktie and the Black Beret. A Coat, All-Weather, Black Shade 385, may be worn over the uniform.

1. **Design:**

a. **Coat.** The coat is a four-button, single-breasted coat with peak lapels, front and underarm darts, two-piece back with vent, two top-pleated patch pockets with flaps and two lower inside hanging pockets with flaps. The shoulder loops for the coat shall be buttoned down and have rounded edges at edge nearest the collar and have 1/8 inch wide gold cord edge braid attached. The inside of the coat shall be 3/8 lined with yoke back, fully lined sleeves, and one inside breast pocket. The coats shall have gold sleeve ornamentation attached to the bottom of the sleeves, 3 inches from bottom of hemmed sleeve. It is designed to fit slightly at the waist to conform to the individual's figure.

b. **Trouser.** The trousers are a dress type with a sewn-on waistband with hook and eye closure, a French fly tab with slide fastener, straight on seam side pockets, double cord hip pockets and cut back darts. The left hip pocket has a buttonhole tab and button. The inside of the waistband has a rubberized non-slip tape. The leg front and back creases are treated with a permanent silicone adhesive bead. The trousers come in two classes, the Class 1 without ornamental braid is worn by enlisted personnel (E-1 through E-4 (Specialist) and the Class 2, with a 1-1/2 inch wide ornamental braid attached on side seams, is worn by officers and enlisted personnel (E4 (Corporal) through E-9). They are designed to fit smoothly, but not tightly, around hips, seat, and waist, with a slight fullness for comfort. The rise is automatically built into the trousers and varies with different lengths.

c. **Shirt (Short or Long Sleeve).** The shirt shall be a dress style with a standup collar, collarstand and yoke. The collar shall contain collar stays. The shirt shall have two plain chest pockets with button through flaps. It shall also have a pen pocket inside the left breast pocket, approximately 1-1/4 inches wide, hemmed at the top and open at the bottom. The shirt shall have tapered shoulder loops and cuffs (Type I). Each shirt shall have permanent creases; three creases on the back and one on each front of shirt positioned in accordance with the marks on the pattern. The creases shall have a continuous appearance on the front through the shirt, front of each pocket and pocket flap. The shirt is available in both long and short sleeves. The long sleeve shirt has two button interlined cuffs and is designed to be worn strictly with a tie. There is one extra button on bottom front of shirt.

d. **Necktie.** The necktie is a four-in-hand type.

e. **Beret.** The beret is a one piece knitted wool shell bound with leather and a drawcord through the binding. The beret has a flash sewn onto the badge stay. The beret is available lined or unlined.

f. **All Weather Coat.**

(1) All Weather Coat. The all weather coat is a six-button, double-breasted model with a belt. The coat has a convertible collar (button at neck), right front gun flap, shoulder loops, adjustable sleeve straps and welt pockets with two inside hanging pockets. The back has a yoke and center vent. The coat is fully lined.

(2) Liner. The removable liner has bound edges, 1/2 raglan sleeves, 2 pass through pocket slits and center back vent, button loops at the bottom of each sleeve and zipper around the edge for attaching the liner to the coat.

2. **Materials:**

- a. **Coat.** 9.5 to 10.5 oz/linear yd., 55/45% polyester wool serge, Army Blue 450.
- b. **Trouser.** 9.5 to 10.5 oz/linear yd., 55/45% polyester wool serge, Army Blue 451.
- c. **Shirt (Short or Long Sleeve).** 5.0 ± 0.25 oz/sq yd., 65/35% polyester/cotton herringbone, durable press and stain resistant, Army White 521.
- d. **Necktie.** 6.5 oz/sq yd., 75/25% polyester/wool tropical, Army Black 385.
- e. **Beret.** 16.5 oz/sq yd., 100% wool, Army Black 1593.
- f. **All Weather Coat.**
 - (1) **Coat.** 5.3 to 6.8 oz/sq yd., 65/35% polyester/cotton poplin, plain weave, water repellent treated, Army Black 385.
 - (2) **Liner.** 4.6 oz/sq yd., 0.4 inch thick 65/35% polyolefin/polyester batting between two layers of 1.5 ± 0.15 oz. sq yd. taffeta. The sleeves for the all weather coat shall be made from a 6.2 oz/sq yd. multifilament acetate faced, combed cotton backed satin weave material. Both materials shall match the shade of the basic material.

3. **Sizing System:** The coats, trousers and shirts are available in both classic and athletic sizes.

- a. **Coats.** The coat sizes are related to the individual's chest, waist and height measurements. The coats are available in sizes 30-52 with lengths of X-Short (XS), Short (S), Regular (R), Long (L), and X-Long (XL). Refer to size Prediction Table (Table I) in Appendix A for available sizes.
- b. **Trousers.** The trouser sizes are related to the individual's waist measurement and height and are available in one inch increments. The trousers are available in sizes 30-52 with lengths of Short, Regular, Long, and X-Long. All trousers are labeled with waist size first, immediately followed by the inseam length. Refer to size Prediction Table (Table II) in Appendix A for available sizes.
- c. **Shirts (Short or Long Sleeve).** The short sleeve shirts are available in 1/2 inch neck size increments from 13-1/2 through 18-1/2 inches with one sleeve length for all sizes. The long sleeve shirt is available in sleeve lengths of 29, 30/31, 32/33, 34/35, 36/37 and 38/39, with neck sizes in 1/2 inch increments from 13-1/2 through 20. Refer to size Prediction Table (Table III) in Appendix A for available sizes.
- d. **Necktie.** The necktie is one size fits all.
- e. **Beret.** The beret is provided with 1/8 inch size increments from size 6-3/8 through 8-1/4. Refer to Size Prediction Table (Table IV) in Appendix A for available sizes.
- f. **All Weather Coat.** The all weather coat is available in two-inch size increments from size 30 through 52 and lengths X-Short (XS), Short (S), Regular (R), Long (L), and X-Long (XL). Refer to Size Prediction Table (Table V) in Appendix A for available sizes.

4. **General Fitting Procedures.**

- a. **Coat.**
 - (1) **Subgarments.** Subgarments required for the fitting of the coat are cotton underwear, dress shirt, polyester/wool trousers, socks, low quarter shoes, belt and buckle.
 - (2) **Measurements.** The chest, waist and height measurements are needed for selection of the proper size and model try-on garment.

(3) Selection of Try-On Garment. Using the individual's chest, waist and height measurements, refer to Table I in Appendix A for size prediction of initial try-on size. If the individual's measurements are close to the minimum or maximum indicated on the size prediction table, select two sizes for try-on. For example, if the individual's height is 5 feet 8 inches and his chest is 40 inches, try the 40 short and 40 regular sizes.

(4) Alterations.

(a) Collar. Raising or lowering of the collar consists of ripping out the seams on the bottom of the collar at the neckline, repositioning the collar on the back of the coat to the desired height, resewing the collar, and pressing. Collars must not be raised or lowered over 1/4-inch.

(b) Sleeves. When lengthening or shortening the sleeves, measure and mark each sleeve individually. One and one-half inches of outlet material is provided for lengthening the sleeves. The gold soutache should be 3 inches from the bottom of the finished sleeve.

(c) Side seams. Taking in or letting out of the side seams should be done only after the next larger or smaller size in either the classic or athletic cut has been tried on.

(d) Button alignment. Adjust button(s) on front to straighten their appearance as required. The front buttons may be repositioned 1/4-inch for further refinement of fit.

(e) Hollow under neck due to very large shoulder muscles or prominent shoulder bone. Let out center seam of back 1/4 inch from the top of the center back seam to the waistline. Try on both classic and athletic sizes to determine best fit.

(f) Decrease or increase (where material permits) chest by altering side seams and reshaping armhole, not to alter original appearance and not by moving buttons in the front.

(g) Wrinkles at chest with tight armholes. Let out center seam of the back from neck to center back waistline. The amount that neck increases at the center back shall be removed from the shoulder seam at the neck. Let out side seam of front to above the waistline.

(h) Too much chest fullness due to flat chest. Decrease front chest by taking in front underarm side seam, reshaping armhole in front and back.

(i) Decrease (excessive material) or increase (where material permits) across the back by adjusting center seam of back vent.

(j) Decrease front overlap, cut front edge of coat to give straight appearance. Restitch seams. On fusible coats, the excess material may be removed at the front side body seam.

(k) Tack corner edge of top pockets as required.

(l) Adjust button on shoulder loop.

(m) Increase left vent overlap (where material permits).

b. Trousers.

(1) Subgarments. Subgarments required for fitting of trousers are cotton underwear, shirt, belt and brass buckle, cocks and low quarter shoes.

(2) Measurements. The waist, seat, and hem line measurements are needed for the selection of the proper size and model try-on garment.

(3) Selection of Try-On Garment. Using the individual's waist, seat, and height measurements, refer to Table II in Appendix A for size prediction of initial try-on size. Trousers are to be fitted to the seat. Make sure the bottom of the waistband is on top of the hip bone, $\pm 1/2$ -inch, before measuring and hemming trousers.

(4) Alterations.

(a) Waist. Alteration of the waist consists of opening the back seam where outlet material has been provided and making necessary adjustments. To avoid improper hanging or dislocated pockets, the waist adjustment must not be more than 1-1/2 inches.

(b) Bottoms. Measure and mark both trouser legs individually. Hem trousers to be measured length, turning up the bottoms as marked. If the proper length model has been selected, no more than a two-inch turn-up should be required. Stitching must not be visible on the outside of the trouser.

(c) Crotch. Let out inseam at the back of the trousers and fill in hollow at the curve as much as possible. If the rise should be longer, take off the fly and sink the crotch the required length. Piece the top of the fly. Adjust the trouser length.

(d) Seat. Let out the outlet material inside the trouser at the seat. Note that if the seat needs to be altered, the crotch of the trousers must also be altered.

c. **Shirts (Short or Long Sleeve).**

(1) Subgarment. The subgarment worn for try-on is the cotton undershirt.

(2) Measurements.

(a) Neck. Place the tape evenly, but not snugly around the middle of the neck, allowing 1/2 inch ease.

(b) Arm. To obtain the full sleeve length, direct the individual being fitted to raise his arm parallel to the floor, bending it at the elbow to form a right angle with the palm of his hand facing the floor. The arm is then measured from the center of the back (parallel with the elbow) along the arm, around to the lower part of the wrist bone.

(3) Selection of Try-On Garment. Using the individuals neck, chest and waist measurement to determine the correct size for the short sleeve shirt and the neck, chest, waist and sleeve measurement to determine the correct size for the long sleeve shirt try-on, refer to Table III in Appendix A for size prediction of initial try on garment for men's classic and athletic Short and Long Sleeve Shirts.

(4) Alterations.

(a) Side Seams. Size seams may be taken in. Ease at waist will not be less than 1-1/4 inches at each side seam.

(b) Button Alignment. Neck button may be moved but not more than 1/4-inch.

(c) Sleeves. Shortening of the shirt sleeves is acceptable for the long sleeve shirt only. Utilize both buttons to obtain the concept of fit prior to altering sleeve length.

d. **Necktie.** The necktie is a one size fits all.

e. **Beret.**

(1) Measurement. Place tape snugly around the largest part of the head, across the forehead and over temples, parallel to the ground.

(2) Selection of try-on size. Use the individual's actual measurement and refer to size prediction Table IV in Appendix A for size prediction of initial try on beret.

(3) Alterations. Altering of the beret is not authorized.

f. **All Weather Coat.**

(1) Subgarments. The subgarments for the chest measurement are the undershirt and dress shirt. The Army Service Uniform is worn as the subgarments for the all weather coat try-on.

(2) Measurements. The chest and height measurement are needed to select try-on size and model.

(3) Selection of Try-On Garment. Attach all weather coat liner for try-on purposes. Using the individual's height and chest measurements, refer to Size Prediction Table V in Appendix A for size prediction of initial try on garment. If the individual's measurements are close to the minimum or maximum indicated on the size prediction table, select two sizes for try-on. For example, if the individual's height is 5 feet, 11 inches, and his chest measurement is between 43 and 45 inches, try-on both the 44 regular and 44 long to get the proper length garment. If the individual's height is 5 feet, 10 inches with a chest measurement of 43 inches, try-on both the 42 regular and 44 regular. In either case, if the selected garment does not fit, try-on additional garments until the best fit is achieved prior to making alterations.

(a) Alterations.

1. Hem line. The all weather coat hem may be adjusted.
2. Sleeves. The sleeves may be shortened or lengthened so sleeves will be about one inch longer than the sleeves of the Army Blue 450 uniform coat. When shortening the sleeves, measure and mark each sleeve individually.
3. Button Alignment. The position of the buttons on the front of the all weather coat may be adjusted no more than 1/4-inch to improve the front closure as long as the row of buttons is straight from the top to bottom when buttoned, and the coat balance is maintained.

5. ***Final Check for Proper Concept of Fit.*** The uniform is designed to fit the figure easily with smooth tailored lines. While the individual is wearing the entire uniform (See Figures 1 and 2), check the following points:

a. ***Coat.*** Completely button coat and inspect for proper concept of fit by checking the following:

- (1) Collar. The shirt collar must show about 1/4 to 1/2 inch above the coat collar at the center back of the coat. The coat collar should fit close around the neck without gapping or overlapping.
- (2) Back, Shoulders, and Chest. The coat must fit easily over the chest and shoulders, giving a slight draped effect in the front and back. Four to seven inches of looseness should be equally distributed around circumference of the waist to provide comfort when moving.
- (3) Hips. Coat fronts should be smooth and even at the bottom edges. The bottom edges in the front of the coat will protrude and the back vent will spread if the coat is too snug at the waist and hips.
- (4) Lengths. **The bottom edge of the coat must extend below the crotch but not less than one inch.** Have the individual stand erect with his arms at his side and bend his fingers at the knuckle, forming a semi-fist and keeping his thumbs straight. **The bottom edge of the coat should fall into the pocket made by bending his fingers, approximately to the tip of this thumb.**
- (5) Sleeves. The sleeves of the coat should fall about 1 inch below the bottom of the wristbone, covering the sleeves of the shirt.

b. ***Trousers.***

- (1) Crotch. Check to see that the crotch of the trouser has sufficient ease to allow enough comfort for the soldier. The properly fitted crotch in a trouser will exhibit no vertical breaks, display no drooping or appear to have a tight binding effect to the wearer.
- (2) Length. **The trousers must hang straight from the seat so the bottom of the front crease of the trousers will reach the top of the instep and be cut on a diagonal line to reach a point approximately midway between the top of the heel and the top of the standard shoe in the back. The trousers may have a slight break in the front.**
- (3) Rise. Make sure the bottom of the trouser waistband is at the top of the hipbone, $\pm 1/2$ inch, and the trousers are well up into the crotch. A short rise may cause tightness and discomfort and a long rise may cause trousers to be baggy in the seat and crotch.
- (4) Seat. The trousers must fit easily around the seat without wrinkles below the backwaist. They must be full enough around the hips to prevent the side pockets from spreading and to allow for comfort in normal movements, such as sitting, climbing stairs and walking. When deciding which of two sizes is more suitable, select the trousers that provide the best fit around the seat, even though an alteration at the waist may be required.
- (5) Waist. **The trousers must be fitted with about a 1/2 inch of ease, fitting easily around the waist/hip without bulging.**

c. ***Shirts (Short or Long Sleeve).*** Completely button shirt, including the cuffs of the long sleeve shirt, and check the following points:

- (1) Chest and Shoulders. There must be enough room around the chest and shoulders to allow free use of the arms without discomfort.

(2) Collar. The collar should fit snugly enough to give a neat appearance, but not snug as to be uncomfortable.

(3) **Sleeves.** The sleeves of the long sleeve shirt must fall to the lower part of the wristbone.

d. **Beret.** The beret should fit so the headband is straight across the forehead and 1 inch above the eyebrow. The excess material shall drape over to the right ear, extending to at least the top of the ear, and no lower than the middle of the ear. (See Figure 3)

e. **All Weather Coat.** To ensure proper concept of fit, attach liner and completely button the coat (See Figure 4), checking the points:

(1) Collar. The collar of the coat should fit close at the neck without gapping or overlapping. The back of the collar should cover the collars of all subgarments.

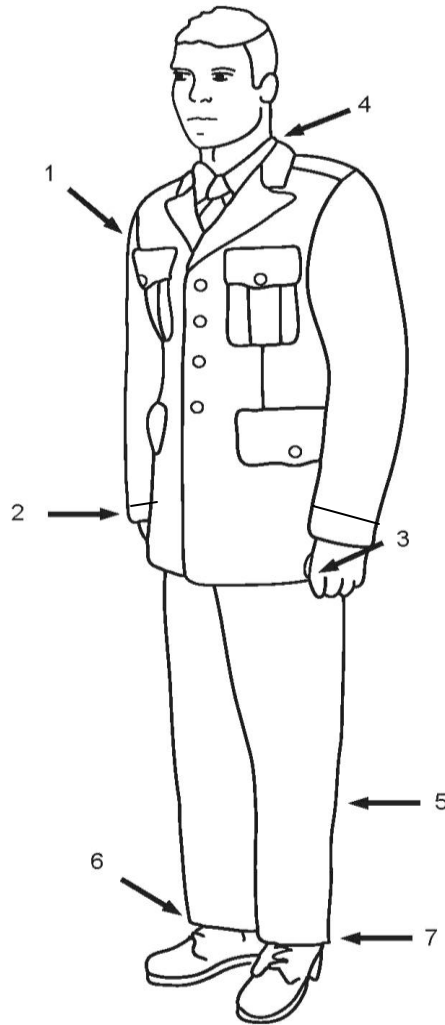
(2) Back, Shoulders, and Chest. The coat, with liner attached, must fit easily and comfortably over the shoulders and chest to allow free use of the arms without pulling or giving discomfort to the wearer.

(3) Hips. The coat must hang freely from the shoulders without waist suppression or tightness around the hips.

(4) Length. The coat should fall approximately 1 1/2 inches below the mid-point of the knee.

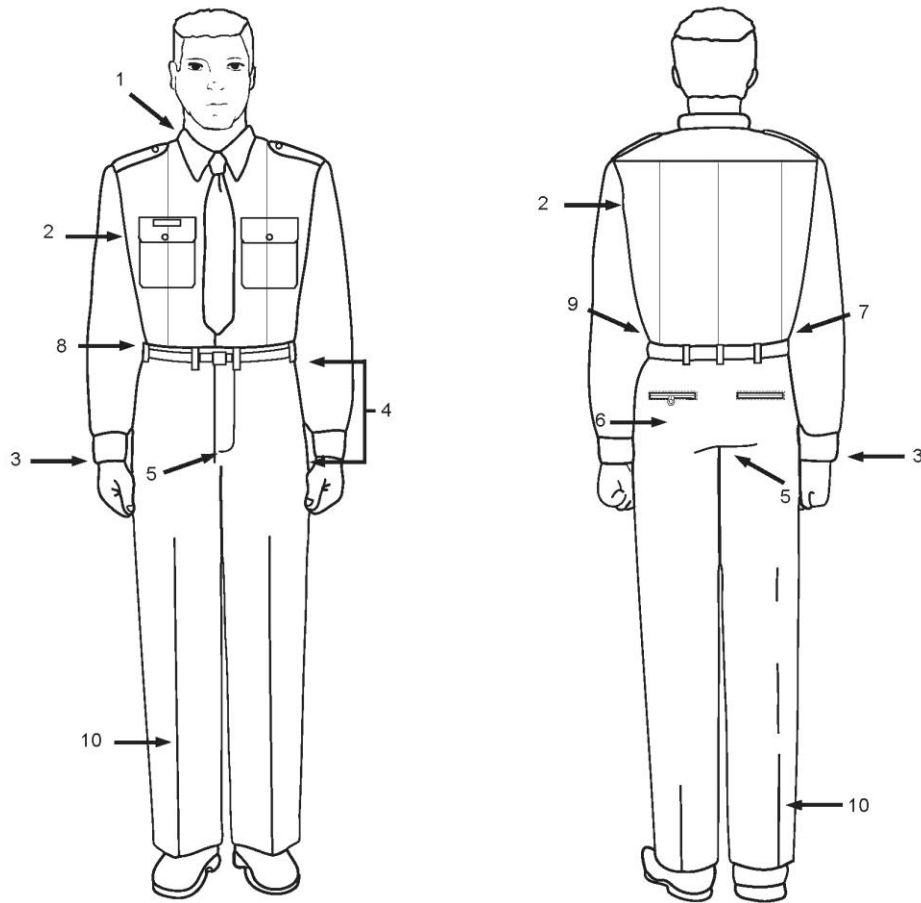
(5) Sleeves. The coat sleeves must be 1/2 inch longer than the green coat and cover the sleeves of all subgarments.

(6) Belt. The belt shall be at natural waistline.



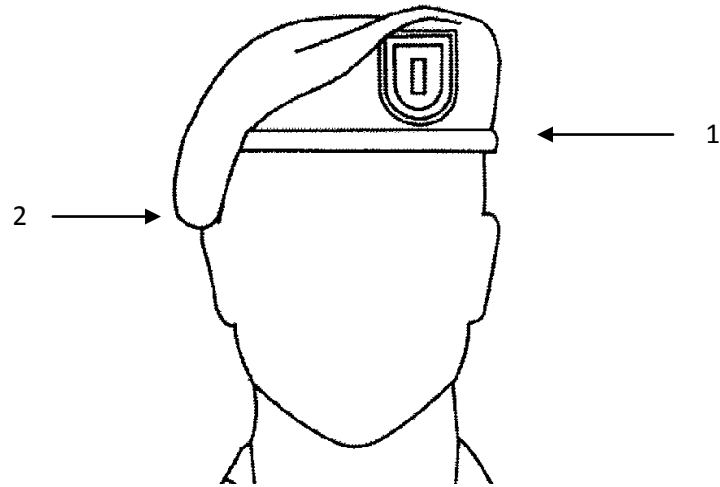
1. Coat fits easily over chest and shoulders.
2. Sleeves fall 1 inch below bottom of wristbone, covering the shirt sleeve.
3. Bottom edge of coat extends below crotch (approximately to the tip of the thumb).
4. Shirt collar shows at least 1/4 inch to 1/2 inch above coat collar at the center back of the coat.
5. The trousers may have a slight break in the front.
6. The bottom of the front crease of the trousers will reach the top of the instep and be cut on a diagonal.
7. Back hem of the trousers will fall approximately midway between the top of the heel and the top of the standard shoe in the back.

FIGURE 1. PROPER FIT AND WEAR OF MEN'S UNIFORM COAT AND TROUSERS



1. Collar fits snugly but not uncomfortably.
2. Fits easily over back and chest allowing free use of the arms.
3. Sleeves fall to lower part of the wristbone.
4. Rise should fit without looseness or constriction.
5. Crotch must have slight ease.
6. Seat must be an easy fit; no wrinkles below back waist.
7. Waist must have 1/2 inch of ease.
8. Waistband bottom is at top hipbone, $\pm 1/2$ inch.
9. Waist measure must be taken over shirt snug, not tight.
10. Trousers crease must hang straight, not twisted. The trousers may have a slight break in the front.

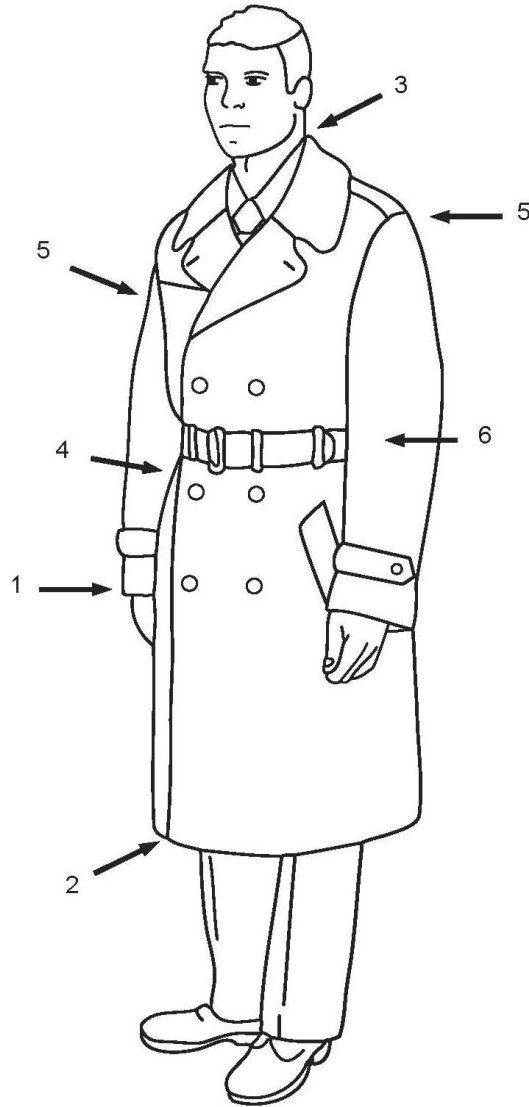
FIGURE 2. PROPER FIT AND WEAR OF MEN'S SHIRT AND TROUSERS



BERET

1. Fits so headband is straight across the forehead and 1 inch above the eyebrow.
2. The excess material shall draped over to the right ear, extending to at least the top of the ear, and no lower than the middle of the ear.

FIGURE 3. PROPER FIT AND WEAR OF BERET



1. Sleeves cover all subgarment sleeves by 1/2 inch.
2. Length falls about 1-1/2 inches below the midpoint of the knee.
3. Back of collar covers all subgarment collars.
4. Coat hangs freely without waist suppression.
5. Coat must fit easily and comfortably over the shoulders and chest, allowing free use of arms.
6. Belt at natural waistline.

FIGURE 4. PROPER FIT AND WEAR OF MEN'S ALL-WEATHER COAT

APPENDIX A

SIZE PREDICTION CHARTS

FOR MEN'S ITEMS

Table I. Size Prediction Table for Men's Coats

SIZE	CHEST	WAIST (C)	WAIST (A)	LENGTH
30	30	27	--	R
31	31	28	--	R
32	32	29	--	R, L
33	33	30	--	XS,S,R,L
34	34	31	--	XS,S,R,L
35	35	32	--	XS,S,R,L
36	36	33	--	XS,S,R,L,XL
37	37	34	--	XS,S,R,L,XL
38	38	35	--	XS,S,R,L,XL
39	39	36	--	XS,S,R,L,XL
40	40	37	34	XS,S,R,L,XL (C); R,L,XL (A)
41	41	38	35	XS,S,R,L,XL (C); R,L,XL (A)
42	42	39	36	XS,S,R,L,XL (C); R,L,XL (A)
43	43	40	37	S,R,L,XL (C); R,L,XL (A)
44	44	41	38	S,R,L,XL (C); R,L,XL (A)
46	46	43	40	S,R,L,XL (C); R,L,XL (A)
48	48	45	42	S,R,L,XL (C); R,L,XL (A)
50	50	47	44	R,L,XL (C); R,L,XL (A)
52	52	49	46	R,L,XL (C); R,L,XL (A)

XS =X-Short (5'0"- 5'5")

S=Short (5'5"-5'8")

R=Regular (5'8"-5'11")

L=Long (5'11"-6'2")

XL=X-Long (6'2" and Up)

(C)= Classic sizes available; (A)= Athletic sizes available

Table II. Size Prediction Table for Men's Trousers

SIZE	WAIST	HIP (C)	HIP (A)	LENGTH
26	26	32	--	R
28	28	34	--	S,R
29	29	35	37	S,R,L (C); R(A)
30	30	36	38	S,R,L,XL (C); R,L,XL(A)
31	31	37	39	S,R,L (C); R,L (A)
32	32	38	40	S,R,L,XL (C); R,L,XL (A)
33	33	39	41	S,R,L XL (C); S,R,L,XL (A)
34	34	40	42	S,R,L XL (C); S,R,L,XL (A)
35	35	41	43	S,R,L (C); S,R,L (A)
36	36	42	44	S,R,L XL (C); S,R,L,XL (A)
37	37	43	45	S,R,L (C); S,R,L (A)
38	38	44	46	S,R,L XL (C); S,R,L,XL (A)
39	39	45	47	S,R,L (C); S,R,L (A)
40	40	46	48	S,R,L,XL (C); S,R,L,XL (A)
41	41	47	49	S,R,L,XL (C); S,R,L,XL (A)
42	42	48	50	R,XL (C); R,XL (A)
44	44	50	52	R,L,XL (C); R,L,XL (A)
46	46	52	54	R,XL (C); R,XL (A)

S=Short (5'3"-5'8")

R=Regular (5'8"-5'11")

L=Long (5'11"-6'2")

XL=X-Long (6'2" and Up)

(C)= Classic sizes available; (A)= Athletic sizes available

Table III. Size Prediction Table for Men's Shirts

NECK	CHEST (C)	WAIST (C)	CHEST (A)	WAIST (A)	LONG SLEEVE LENGTH
13-1/2	34	28	--	--	32/33
14	35-1/2	29-1/2	--	--	29, 30/31, 32/33
14-1/2	37	31	--	--	30/31, 32/33
15	38-1/2	32-1/2	--	--	29, 30/31, 32/33, 34/35
15-1/2	40	34	41	32	30/31, 32/33, 34/35(C) 32/33, 34/35(A)
16	41-1/2	35-1/2	42-1/2	33-1/2	29, 30/31, 32/33, 34/35(C) 30/31, 32/33, 34/35(A)
16-1/2	43	37	44	35	30/31,32/33,34/35,36/37(C) 32/33,34/35,36/37(A)
17	44-1/2	38-1/2	45-1/2	36-1/2	32/33,34/35,36/37(C) 32/33,34/35,36/37,38/39(A)
17-1/2	46	40	47	38	32/33,34/35,36/37(C) 32/33,34/35,36/37,38/39(A)
18	47-1/2	41-1/2	48-1/2	39-1/2	32/33,34/35,36/37,38/39(C) 32/33,34/35,36/37,38/39(A)
18-1/2	49	43	50	41	34/35,36/37,38/39(C) 32/33,34/35,36/37,38/39(A)
19	50-1/2	44-1/2	51-1/2	42-1/2	34/35,36/37,38/39(C) 34/35,36/37,38/39(A)
19-1/2	--	--	53	44	34/35,36/37
20	--	--	54-1/2	45-1/2	34/35,36/37

(C)= Classic sizes available; (A)= Athletic sizes available

Table IV. Size Prediction Table for Beret

<u>Head Measurement</u>	<u>Beret Size</u>
20-1/8	6-3/8
20-1/2	6-1/2
20-7/8	6-5/8
21-1/4	6-3/4
21-5/8	6-7/8
22	7
22-3/8	7-1/8
22-3/4	7-1/4
23-1/8	7-3/8
23-1/2	7-1/2
23-7/8	7-5/8
24-1/4	7-3/4
24-5/8	7-7/8
25	8
25-3/4	8-1/4

Table V. Size Prediction Table for Men's All-Weather Coat

Chest (inches)	Height				
	5'0" -5'5"	5'5" -5'8"	5'8" -5'11"	5'11" -6'2"	6'2"-Up
29 - 31	--	30S	30R	--	--
31 - 33	32XS	32S	32R	32L	--
33 - 35	34XS	34S	34R	34L	34XL
35 - 37	36XS	36S	36R	36L	36XL
37 - 39	38XS	38S	38R	38L	38XL
39 - 41	40XS	40S	40R	40L	40XL
41 - 43	42XS	42S	42R	42L	42XL
43 - 45	--	44S	44R	44L	44XL
45 - 47	--	46S	46R	46L	46XL
47 - 49	--	48S	48R	48L	48XL
49 - 51	--	50S	50R	50L	--
51 - 53	--	52S	52R	52L	--

APPENDIX B

NATIONAL STOCK NUMBERS (NSNs)

FOR MEN'S ITEMS

NSNs for Men's Coats

COAT,MAN'S SIZE = 30R CLA	8405015522818	COAT,MAN'S SIZE = 39L CLA	8405015522943	COAT,MAN'S SIZE = 44R ATH	8405015523130
COAT,MAN'S SIZE = 31R CLA	8405015522819	COAT,MAN'S SIZE = 39XL CLA	8405015522944	COAT,MAN'S SIZE = 44R CLA	8405015522977
COAT,MAN'S SIZE = 32R CLA	8405015522820	COAT,MAN'S SIZE = 40XS CLA	8405015522946	COAT,MAN'S SIZE = 44L ATH	8405015523132
COAT,MAN'S SIZE = 32L CLA	8405015522821	COAT,MAN'S SIZE = 40S CLA	8405015522947	COAT,MAN'S SIZE = 44L CLA	8405015522978
COAT,MAN'S SIZE = 33XS CLA	8405015522823	COAT,MAN'S SIZE = 40R ATH	8405015523096	COAT,MAN'S SIZE = 44XL ATH	8405015523133
COAT,MAN'S SIZE = 33S CLA	8405015522824	COAT,MAN'S SIZE = 40R CLA	8405015522949	COAT,MAN'S SIZE = 44XL CLA	8405015522979
COAT,MAN'S SIZE = 33R CLA	8405015522825	COAT,MAN'S SIZE = 40L ATH	8405015523097	COAT,MAN'S SIZE = 46S CLA	8405015522985
COAT,MAN'S SIZE = 33L CLA	8405015522826	COAT,MAN'S SIZE = 40L CLA	8405015522950	COAT,MAN'S SIZE = 46R ATH	8405015523143
COAT,MAN'S SIZE = 34XS CLA	8405015522829	COAT,MAN'S SIZE = 40XL ATH	8405015523099	COAT,MAN'S SIZE = 46R CLA	8405015522986
COAT,MAN'S SIZE = 34S CLA	8405015522830	COAT,MAN'S SIZE = 40XL CLA	8405015522958	COAT,MAN'S SIZE = 46L ATH	8405015523140
COAT,MAN'S SIZE = 34R CLA	8405015522832	COAT,MAN'S SIZE = 41XS CLA	8405015522959	COAT,MAN'S SIZE = 46L CLA	8405015522989
COAT,MAN'S SIZE = 34L CLA	8405015522833	COAT,MAN'S SIZE = 41S CLA	8405015522960	COAT,MAN'S SIZE = 46XL ATH	8405-15523141
COAT,MAN'S SIZE = 35XS CLA	8405015522841	COAT,MAN'S SIZE = 41R ATH	8405015523109	COAT,MAN'S SIZE = 46XL CLA	8405015522990
COAT,MAN'S SIZE = 35S CLA	8405015522845	COAT,MAN'S SIZE = 41R CLA	8405015522961	COAT,MAN'S SIZE = 48S CLA	8405015522991
COAT,MAN'S SIZE = 35R CLA	8405015522847	COAT,MAN'S SIZE = 41L ATH	8405015523110	COAT,MAN'S SIZE = 48R ATH	8405015523149
COAT,MAN'S SIZE = 35L CLA	8405015522846	COAT,MAN'S SIZE = 41L CLA	8405015522962	COAT,MAN'S SIZE = 48R CLA	8405015522992
COAT,MAN'S SIZE = 36XS CLA	8405015522848	COAT,MAN'S SIZE = 41XL ATH	8405015523111	COAT,MAN'S SIZE = 48L ATH	8405015523148
COAT,MAN'S SIZE = 36S CLA	8405015522858	COAT,MAN'S SIZE = 41XL CLA	8405015522963	COAT,MAN'S SIZE = 48L CLA	8405015522994
COAT,MAN'S SIZE = 36R CLA	8405015522860	COAT,MAN'S SIZE = 42XS CLA	8405015522964	COAT,MAN'S SIZE = 48XL ATH	8405015523150
COAT,MAN'S SIZE = 36L CLA	8405015522861	COAT,MAN'S SIZE = 42S CLA	8405015522965	COAT,MAN'S SIZE = 48XL CLA	8405015522995
COAT,MAN'S SIZE = 36XL CLA	8405015522862	COAT,MAN'S SIZE = 42R ATH	8405015523115	COAT,MAN'S SIZE = 50R ATH	8405015523157
COAT,MAN'S SIZE = 37XS CLA	8405015522885	COAT,MAN'S SIZE = 42R CLA	8405015522968	COAT,MAN'S SIZE = 50R CLA	8405015522996
COAT,MAN'S SIZE = 37S CLA	8405015522887	COAT,MAN'S SIZE = 42L ATH	8405015523116	COAT,MAN'S SIZE = 50L ATH	8405015522838
COAT,MAN'S SIZE = 37R CLA	8405015522888	COAT,MAN'S SIZE = 42L CLA	8405015522969	COAT,MAN'S SIZE = 50L CLA	8405015522997
COAT,MAN'S SIZE = 37L CLA	8405015522891	COAT,MAN'S SIZE = 42XL ATH	8405015523118	COAT,MAN'S SIZE = 50XL ATH	8405015522839
COAT,MAN'S SIZE = 37XL CLA	8405015522893	COAT,MAN'S SIZE = 42XL CLA	8405015522970	COAT,MAN'S SIZE = 50XL CLA	8405015522998
COAT,MAN'S SIZE = 38XS CLA	8405015522895	COAT,MAN'S SIZE = 43S CLA	8405015522971	COAT,MAN'S SIZE = 52R ATH	8405015523027
COAT,MAN'S SIZE = 38S CLA	8405015522897	COAT,MAN'S SIZE = 43R ATH	8405015523123	COAT,MAN'S SIZE = 52R CLA	8405015523000
COAT,MAN'S SIZE = 38R CLA	8405015522898	COAT,MAN'S SIZE = 43R CLA	8405015522972	COAT,MAN'S SIZE = 52L ATH	8405015523158
COAT,MAN'S SIZE = 38L CLA	8405015522936	COAT,MAN'S SIZE = 43L ATH	8405015523125	COAT,MAN'S SIZE = 52L CLA	8405015523003
COAT,MAN'S SIZE = 38XL CLA	8405015522935	COAT,MAN'S SIZE = 43L CLA	8405015522973	COAT,MAN'S SIZE = 52XL ATH	8405015523206
COAT,MAN'S SIZE = 39XS CLA	8405015522937	COAT,MAN'S SIZE = 43XL ATH	8405015523126	COAT,MAN'S SIZE = 52XL CLA	8405015523004
COAT,MAN'S SIZE = 39S CLA	8405015522940	COAT,MAN'S SIZE = 43XL CLA	8405015522974		
COAT,MAN'S SIZE = 39R CLA	8405015522942	COAT,MAN'S SIZE = 44S CLA	8405015522975		

NSNs for Men's Trousers W/O Braid

TROUSERS,MEN'S SIZE = 26R CLA	8405015523355	TROUSERS,MEN'S SIZE = 37S ATH	8405015523486
TROUSERS,MEN'S SIZE = 28S CLA	8405015523359	TROUSERS,MEN'S SIZE = 37S CLA	8405015523394
TROUSERS,MEN'S SIZE = 28R CLA	8405015523360	TROUSERS,MEN'S SIZE = 37R ATH	8405015523488
TROUSERS,MEN'S SIZE = 29S CLA	8405015523362	TROUSERS,MEN'S SIZE = 37R CLA	8405015523395
TROUSERS,MEN'S SIZE = 29R CLA	8405015523361	TROUSERS,MEN'S SIZE = 37L ATH	8405015523491
TROUSERS,MEN'S SIZE = 29L CLA	8405015523363	TROUSERS,MEN'S SIZE = 37L CLA	8405015523396
TROUSERS,MEN'S SIZE = 30S CLA	8405015523364	TROUSERS,MEN'S SIZE = 38S ATH	8405015523489
TROUSERS,MEN'S SIZE = 30R CLA	8405015523366	TROUSERS,MEN'S SIZE = 38S CLA	8405015523397
TROUSERS,MEN'S SIZE = 30L CLA	8405015523365	TROUSERS,MEN'S SIZE = 38R ATH	8405015523492
TROUSERS,MEN'S SIZE = 30XL CLA	8405015658666	TROUSERS,MEN'S SIZE = 38R CLA	8405015523398
TROUSERS,MEN'S SIZE = 31S CLA	8405015523367	TROUSERS,MEN'S SIZE = 38L ATH	8405015523493
TROUSERS,MEN'S SIZE = 31R CLA	8405015523368	TROUSERS,MEN'S SIZE = 38L CLA	8405015523400
TROUSERS,MEN'S SIZE = 31L CLA	8405015523370	TROUSERS,MEN'S SIZE = 38XL ATH	8405015659917
TROUSERS,MEN'S SIZE = 32S CLA	8405015523371	TROUSERS,MEN'S SIZE = 38XL CLA	8405015662665
TROUSERS,MEN'S SIZE = 32R ATH	8405015523439	TROUSERS,MEN'S SIZE = 39S ATH	8405015523494
TROUSERS,MEN'S SIZE = 32R CLA	8405015523374	TROUSERS,MEN'S SIZE = 39S CLA	8405015523401
TROUSERS,MEN'S SIZE = 32L ATH	8405015523440	TROUSERS,MEN'S SIZE = 39R ATH	8405015523497
TROUSERS,MEN'S SIZE = 32L CLA	8405015523377	TROUSERS,MEN'S SIZE = 39R CLA	8405015523402
TROUSERS,MEN'S SIZE = 32XL ATH	8405015659780	TROUSERS,MEN'S SIZE = 39L ATH	8405015523498
TROUSERS,MEN'S SIZE = 32XL CLA	8405015659217	TROUSERS,MEN'S SIZE = 39L CLA	8405015523404
TROUSERS,MEN'S SIZE = 33S ATH	8405015523447	TROUSERS,MEN'S SIZE = 40S ATH	8405015523501
TROUSERS,MEN'S SIZE = 33S CLA	8405015523378	TROUSERS,MEN'S SIZE = 40S CLA	8405015523403
TROUSERS,MEN'S SIZE = 33R ATH	8405015523449	TROUSERS,MEN'S SIZE = 40R ATH	8405015523502
TROUSERS,MEN'S SIZE = 33R CLA	8405015523379	TROUSERS,MEN'S SIZE = 40R CLA	8405015523405
TROUSERS,MEN'S SIZE = 33L ATH	8405015523453	TROUSERS,MEN'S SIZE = 40L ATH	8405015523504
TROUSERS,MEN'S SIZE = 33L CLA	8405015523380	TROUSERS,MEN'S SIZE = 40L CLA	8405015523407
TROUSERS,MEN'S SIZE = 33XL ATH	8405015659782	TROUSERS,MEN'S SIZE = 40XL ATH	8405015659919
TROUSERS,MEN'S SIZE = 33XL CLA	8405015659800	TROUSERS,MEN'S SIZE = 40XL CLA	8405015662675
TROUSERS,MEN'S SIZE = 34S ATH	8405015523454	TROUSERS,MEN'S SIZE = 41S ATH	8405015523505
TROUSERS,MEN'S SIZE = 34S CLA	8405015523381	TROUSERS,MEN'S SIZE = 41S CLA	8405015523410
TROUSERS,MEN'S SIZE = 34R ATH	8405015523455	TROUSERS,MEN'S SIZE = 41R ATH	8405015523503
TROUSERS,MEN'S SIZE = 34R CLA	8405015523385	TROUSERS,MEN'S SIZE = 41R CLA	8405015523411
TROUSERS,MEN'S SIZE = 34L ATH	8405015523457	TROUSERS,MEN'S SIZE = 41L ATH	8405015523507
TROUSERS,MEN'S SIZE = 34L CLA	8405015523386	TROUSERS,MEN'S SIZE = 41L CLA	8405015523413
TROUSERS,MEN'S SIZE = 34XL ATH	8405015659786	TROUSERS,MEN'S SIZE = 42R ATH	8405015523509
TROUSERS,MEN'S SIZE = 34XL CLA	8405015659293	TROUSERS,MEN'S SIZE = 42R CLA	8405015523414
TROUSERS,MEN'S SIZE = 35S CLA	8405015523388	TROUSERS,MEN'S SIZE = 42XL ATH	8405015659922
TROUSERS,MEN'S SIZE = 35S ATH	8405015523458	TROUSERS,MEN'S SIZE = 42XL CLA	8405015662684
TROUSERS,MEN'S SIZE = 35R ATH	8405015523460	TROUSERS,MEN'S SIZE = 44R ATH	8405015523450
TROUSERS,MEN'S SIZE = 35R CLA	8405015523390	TROUSERS,MEN'S SIZE = 44R CLA	8405015523416
TROUSERS,MEN'S SIZE = 35L ATH	8405015523480	TROUSERS,MEN'S SIZE = 44L ATH	8405015523461
TROUSERS,MEN'S SIZE = 35L CLA	8405015523389	TROUSERS,MEN'S SIZE = 44L CLA	8405015523421
TROUSERS,MEN'S SIZE = 36S ATH	8405015523482	TROUSERS,MEN'S SIZE = 44XL ATH	8405015659924
TROUSERS,MEN'S SIZE = 36S CLA	8405015523391	TROUSERS,MEN'S SIZE = 44XL CLA	8405015662688
TROUSERS,MEN'S SIZE = 36R ATH	8405015523484	TROUSERS,MEN'S SIZE = 46R ATH	8405015523523
TROUSERS,MEN'S SIZE = 36R CLA	8405015523392	TROUSERS,MEN'S SIZE = 46R CLA	8405015523422
TROUSERS,MEN'S SIZE = 36L ATH	8405015523485	TROUSERS,MEN'S SIZE = 46XL ATH	8405015659928
TROUSERS,MEN'S SIZE = 36L CLA	8405015523393	TROUSERS,MEN'S SIZE = 46XL CLA	8405015662690
TROUSERS,MEN'S SIZE = 36XL ATH	8405015659803		
TROUSERS,MEN'S SIZE = 36XL CLA	8405015662632		

NSNs for Men's Trousers W/Braid

TROUSERS,MEN'S SIZE = 26R CLA	8405015521283	TROUSERS,MEN'S SIZE = 37S ATH	8405015522874
TROUSERS,MEN'S SIZE = 28S CLA	8405015521754	TROUSERS,MEN'S SIZE = 37S CLA	8405015521936
TROUSERS,MEN'S SIZE = 28R CLA	8405015521755	TROUSERS,MEN'S SIZE = 37R ATH	8405015522875
TROUSERS,MEN'S SIZE = 29S CLA	8405015521757	TROUSERS,MEN'S SIZE = 37R CLA	8405015521937
TROUSERS,MEN'S SIZE = 29R CLA	8405015521760	TROUSERS,MEN'S SIZE = 37L ATH	8405015522876
TROUSERS,MEN'S SIZE = 29L CLA	8405015521762	TROUSERS,MEN'S SIZE = 37L CLA	8405015521939
TROUSERS,MEN'S SIZE = 30S CLA	8405015521763	TROUSERS,MEN'S SIZE = 38S ATH	8405015522882
TROUSERS,MEN'S SIZE = 30R CLA	8405015521764	TROUSERS,MEN'S SIZE = 38S CLA	8405015521942
TROUSERS,MEN'S SIZE = 30L CLA	8405015521767	TROUSERS,MEN'S SIZE = 38R ATH	8405015522881
TROUSERS,MEN'S SIZE = 30XL CLA	8405015657663	TROUSERS,MEN'S SIZE = 38R CLA	8405015521944
TROUSERS,MEN'S SIZE = 31S CLA	8405015521781	TROUSERS,MEN'S SIZE = 38L ATH	8405015522884
TROUSERS,MEN'S SIZE = 31R CLA	8405015521782	TROUSERS,MEN'S SIZE = 38L CLA	8405015521945
TROUSERS,MEN'S SIZE = 31L CLA	8405015521788	TROUSERS,MEN'S SIZE = 38XL ATH	8405015658950
TROUSERS,MEN'S SIZE = 32S CLA	8405015521787	TROUSERS,MEN'S SIZE = 38XL CLA	8405015658057
TROUSERS,MEN'S SIZE = 32R ATH	8405015522834	TROUSERS,MEN'S SIZE = 39S ATH	8405015522886
TROUSERS,MEN'S SIZE = 32R CLA	8405015521789	TROUSERS,MEN'S SIZE = 39S CLA	8405015521946
TROUSERS,MEN'S SIZE = 32L ATH	8405015522835	TROUSERS,MEN'S SIZE = 39R ATH	8405015522892
TROUSERS,MEN'S SIZE = 32L CLA	8405015521793	TROUSERS,MEN'S SIZE = 39R CLA	8405015521949
TROUSERS,MEN'S SIZE = 32XL ATH	8405015658601	TROUSERS,MEN'S SIZE = 39L ATH	8405015522894
TROUSERS,MEN'S SIZE = 32XL CLA	8405015657671	TROUSERS,MEN'S SIZE = 39L CLA	8405015521950
TROUSERS,MEN'S SIZE = 33S ATH	8405015522836	TROUSERS,MEN'S SIZE = 40S ATH	8405015522896
TROUSERS,MEN'S SIZE = 33S CLA	8405015521796	TROUSERS,MEN'S SIZE = 40S CLA	8405015521951
TROUSERS,MEN'S SIZE = 33R ATH	8405015522837	TROUSERS,MEN'S SIZE = 40R ATH	8405015522899
TROUSERS,MEN'S SIZE = 33R CLA	8405015521797	TROUSERS,MEN'S SIZE = 40R CLA	8405015521955
TROUSERS,MEN'S SIZE = 33L ATH	8405015522849	TROUSERS,MEN'S SIZE = 40L ATH	8405015522900
TROUSERS,MEN'S SIZE = 33L CLA	8405015521798	TROUSERS,MEN'S SIZE = 40L CLA	8405015521957
TROUSERS,MEN'S SIZE = 33XL ATH	8405015658665	TROUSERS,MEN'S SIZE = 40XL ATH	8405015659023
TROUSERS,MEN'S SIZE = 33XL CLA	8405015657673	TROUSERS,MEN'S SIZE = 40XL CLA	8405015658061
TROUSERS,MEN'S SIZE = 34S ATH	8405015522852	TROUSERS,MEN'S SIZE = 41S ATH	8405015522901
TROUSERS,MEN'S SIZE = 34S CLA	8405015521800	TROUSERS,MEN'S SIZE = 41S CLA	8405015521956
TROUSERS,MEN'S SIZE = 34R ATH	8405015522854	TROUSERS,MEN'S SIZE = 41R ATH	8405015522903
TROUSERS,MEN'S SIZE = 34R CLA	8405015521801	TROUSERS,MEN'S SIZE = 41R CLA	8405015521958
TROUSERS,MEN'S SIZE = 34L ATH	8405015522855	TROUSERS,MEN'S SIZE = 41L ATH	8405015522904
TROUSERS,MEN'S SIZE = 34L CLA	8405015521804	TROUSERS,MEN'S SIZE = 41L CLA	8405015521959
TROUSERS,MEN'S SIZE = 34XL ATH	8405015658675	TROUSERS,MEN'S SIZE = 42R ATH	8405015522909
TROUSERS,MEN'S SIZE = 34XL CLA	8405015657820	TROUSERS,MEN'S SIZE = 42R CLA	8405015521961
TROUSERS,MEN'S SIZE = 35S ATH	8405015522857	TROUSERS,MEN'S SIZE = 42XL ATH	8405015659030
TROUSERS,MEN'S SIZE = 35S CLA	8405015521805	TROUSERS,MEN'S SIZE = 42XL CLA	8405015658076
TROUSERS,MEN'S SIZE = 35R ATH	8405015522863	TROUSERS,MEN'S SIZE = 44R ATH	8405015522913
TROUSERS,MEN'S SIZE = 35R CLA	8405015521806	TROUSERS,MEN'S SIZE = 44R CLA	8405015521962
TROUSERS,MEN'S SIZE = 35L ATH	8405015522864	TROUSERS,MEN'S SIZE = 44L ATH	8405015522912
TROUSERS,MEN'S SIZE = 35L CLA	8405015521818	TROUSERS,MEN'S SIZE = 44L CLA	8405015521964
TROUSERS,MEN'S SIZE = 36S ATH	8405015522866	TROUSERS,MEN'S SIZE = 44XL ATH	8405015659036
TROUSERS,MEN'S SIZE = 36S CLA	8405015521817	TROUSERS,MEN'S SIZE = 44XL CLA	8405015658088
TROUSERS,MEN'S SIZE = 36R ATH	8405015522869	TROUSERS,MEN'S SIZE = 46R ATH	8405015522914
TROUSERS,MEN'S SIZE = 36R CLA	8405015521820	TROUSERS,MEN'S SIZE = 46R CLA	8405015521982
TROUSERS,MEN'S SIZE = 36L ATH	8405015522873	TROUSERS,MEN'S SIZE = 46XL ATH	8405015659237
TROUSERS,MEN'S SIZE = 36L CLA	8405015521935	TROUSERS,MEN'S SIZE = 46XL CLA	8405015658097
TROUSERS,MEN'S SIZE = 36XL ATH	8405015658936		
TROUSERS,MEN'S SIZE = 36XL CLA	8405015657974		

NSNs for Men's Shirt, Long Sleeve

SHIRT,MAN'S SIZE = 13.5X32/33 C	8405015546206	SHIRT,MAN'S SIZE = 18X32/33 C	8405015546883
SHIRT,MAN'S SIZE = 14X29 C	8405015558673	SHIRT,MAN'S SIZE = 18X32/33 A	8405015549222
SHIRT,MAN'S SIZE = 14X30/31 C	8405015547115	SHIRT,MAN'S SIZE = 18X34/35 A	8405015549279
SHIRT,MAN'S SIZE = 14X32/33 C	8405015548013	SHIRT,MAN'S SIZE = 18X34/35 C	8405015547910
SHIRT,MAN'S SIZE = 14.5X30/31 C	8405015546781	SHIRT,MAN'S SIZE = 18X36/37 A	8405015549325
SHIRT,MAN'S SIZE = 14.5X32/33 C	8405015547124	SHIRT,MAN'S SIZE = 18X36/37 C	8405015548363
SHIRT,MAN'S SIZE = 15X29 C	8405015546783	SHIRT,MAN'S SIZE = 18X38 A	8405015549365
SHIRT,MAN'S SIZE = 15X30/31 C	8405015547127	SHIRT,MAN'S SIZE = 18X38 C	8405015548422
SHIRT,MAN'S SIZE = 15X32/33 C	8405015548018	SHIRT,MAN'S SIZE = 18.5X32/33 A	8405015549224
SHIRT,MAN'S SIZE = 15X34/35 C	8405015548384	SHIRT,MAN'S SIZE = 18.5X34/35 C	8405015547111
SHIRT,MAN'S SIZE = 15.5X30/31 C	8405015546787	SHIRT,MAN'S SIZE = 18.5X34/35 A	8405015549283
SHIRT,MAN'S SIZE = 15.5X32/33 C	8405015547130	SHIRT,MAN'S SIZE = 18.5X36/37 A	8405015549348
SHIRT,MAN'S SIZE = 15.5X32/33 A	8405015548477	SHIRT,MAN'S SIZE = 18.5X36/37 C	8405015547916
SHIRT,MAN'S SIZE = 15.5X34/35 A	8405015549247	SHIRT,MAN'S SIZE = 18.5X38 A	8405015549369
SHIRT,MAN'S SIZE = 15.5X34/35 C	8405015548026	SHIRT,MAN'S SIZE = 18.5X38 C	8405015548368
SHIRT,MAN'S SIZE = 16X29 C	8405015546797	SHIRT,MAN'S SIZE = 19X34/35 C	8405015547113
SHIRT,MAN'S SIZE = 16X30/31 A	8405015549211	SHIRT,MAN'S SIZE = 19X34/35 A	8405015549239
SHIRT,MAN'S SIZE = 16X30/31 C	8405015547144	SHIRT,MAN'S SIZE = 19X36/37 A	8405015549295
SHIRT,MAN'S SIZE = 16X32/33 A	8405015549256	SHIRT,MAN'S SIZE = 19X36/37 C	8405015547996
SHIRT,MAN'S SIZE = 16X32/33 C	8405015548151	SHIRT,MAN'S SIZE = 19X38 A	8405015549358
SHIRT,MAN'S SIZE = 16X34/35 A	8405015549309	SHIRT,MAN'S SIZE = 19X38 C	8405015548373
SHIRT,MAN'S SIZE = 16X34/35 C	8405015548391	SHIRT,MAN'S SIZE = 19.5X34/35 A	8405015549240
SHIRT,MAN'S SIZE = 16.5X30/31 C	8405015546807	SHIRT,MAN'S SIZE = 19.5X36/37 A	8405015549306
SHIRT,MAN'S SIZE = 16.5X32/33 A	8405015549214	SHIRT,MAN'S SIZE = 20X34/35 A	8405015549244
SHIRT,MAN'S SIZE = 16.5X34/35 A	8405015549262	SHIRT,MAN'S SIZE = 20X36/37 A	8405015549307
SHIRT,MAN'S SIZE = 16.5X36/37 C	8405015548420		
SHIRT,MAN'S SIZE = 16.5X36/37 A	8405015549313		
SHIRT,MAN'S SIZE = 16.5X32/33 C	8405015547150		
SHIRT,MAN'S SIZE = 16.5X34/35 C	8405015548338		
SHIRT,MAN'S SIZE = 17X32/33 C	8405015546814		
SHIRT,MAN'S SIZE = 17X32/33 A	8405015549219		
SHIRT,MAN'S SIZE = 17X34/35 A	8405015549272		
SHIRT,MAN'S SIZE = 17X34/35 C	8405015547158		
SHIRT,MAN'S SIZE = 17X36/37 A	8405015549317		
SHIRT,MAN'S SIZE = 17X36/37 C	8405015548342		
SHIRT,MAN'S SIZE = 17X38 A	8405015549361		
SHIRT,MAN'S SIZE = 17.5X32/33 C	8405015546819		
SHIRT,MAN'S SIZE = 17.5X32/33 A	8405015549220		
SHIRT,MAN'S SIZE = 17.5X34/35 A	8405015549274		
SHIRT,MAN'S SIZE = 17.5X34/35 C	8405015547904		
SHIRT,MAN'S SIZE = 17.5X36/37 A	8405015549321		
SHIRT,MAN'S SIZE = 17.5X36/37 C	8405015548347		

NSNs for Men's Shirt, Short Sleeve

SHIRT,MAN'S SIZE = 13-1/2 R C	8405015549638
SHIRT,MAN'S SIZE = 14R CLA	8405015549643
SHIRT,MAN'S SIZE = 14-1/2R C	8405015549651
SHIRT,MAN'S SIZE = 15R CLA	8405015549658
SHIRT,MAN'S SIZE = 15-1/2R A	8405015549930
SHIRT,MAN'S SIZE = 15-1/2R C	8405015549663
SHIRT,MAN'S SIZE = 16R ATH	8405015549935
SHIRT,MAN'S SIZE = 16R CLA	8405015549665
SHIRT,MAN'S SIZE = 16L ATH	8405015549942
SHIRT,MAN'S SIZE = 16L CLA	8405015549686
SHIRT,MAN'S SIZE = 16-1/2R A	8405015549953
SHIRT,MAN'S SIZE = 16-1/2R C	8405015549695
SHIRT,MAN'S SIZE = 16-1/2L A	8405015549958
SHIRT,MAN'S SIZE = 16-1/2L C	8405015549696
SHIRT,MAN'S SIZE = 17R ATH	8405015549973
SHIRT,MAN'S SIZE = 17R CLA	8405015549699
SHIRT,MAN'S SIZE = 17L ATH	8405015549986
SHIRT,MAN'S SIZE = 17L CLA	8405015549703
SHIRT,MAN'S SIZE = 17-1/2R A	8405015550001
SHIRT,MAN'S SIZE = 17-1/2R C	8405015549705
SHIRT,MAN'S SIZE = 17-1/2L A	8405015550015
SHIRT,MAN'S SIZE = 17-1/2L C	8405015549708
SHIRT,MAN'S SIZE = 18R ATH	8405015550025
SHIRT,MAN'S SIZE = 18R CLA	8405015549709
SHIRT,MAN'S SIZE = 18L ATH	8405015550032
SHIRT,MAN'S SIZE = 18L CLA	8405015549711
SHIRT, MAN'S SIZE =18-1/2R ATH	8405015804257
SHIRT,MAN'S SIZE = 18-1/2R C	8405015549713
SHIRT,MAN'S SIZE = 18-1/2L A	8405015550036
SHIRT,MAN'S SIZE = 18-1/2L C	8405015549718
SHIRT, MANS SIZE =19R ATH	8405015804265
SHIRT, MAN'S SIZE = 19R CLA	8405015804240
SHIRT,MAN'S SIZE = 19L ATH	8405015550041
SHIRT,MAN'S SIZE = 19L CLA	8405015549725
SHIRT, MAN'S SIZE =19-1/2 ATH	8405015804267
SHIRT , MAN'S SIZE = 20 ATH	8405015804274

NSNs for Beret

6 -3/8	8405011031351
6 -1/2	8405010887811
6-5/8	8405010890135
6-3/4	8405010890136
6 -7/8	8405010887902
7	8405010890137
7-1/8	8405010887812
7-1/4	8405010887805
7-3/8	8405010887813
7-1/2	8405010890138
7-5/8	8405010890139
7-3/4	8405010890140
7-7/8	8405014802858
8	8405014974986
8-1/4	8405014975037

NSNs for Men's All Weather Coats

30S	8405-01-308-8673	40R	8405-01-308-8696
30R	8405-01-308-8674	40L	8405-01-308-8697
32XS	8405-01-308-8675	40XL	8405-01-308-8698
32S	8405-01-308-8676	42XS	8405-01-308-8699
32R	8405-01-308-8677	42S	8405-01-308-8700
32L	8405-01-308-8678	42R	8405-01-308-8701
34XS	8405-01-308-8679	42L	8405-01-308-8702
34S	8405-01-308-8680	42XL	8405-01-308-8703
34R	8405-01-308-8681	44S	8405-01-308-8704
34L	8405-01-308-8682	44R	8405-01-308-8705
34XL	8405-01-308-8683	44L	8405-01-308-8706
36XS	8405-01-308-8684	44XL	8405-01-308-8707
36S	8405-01-308-8685	46S	8405-01-308-8708
36R	8405-01-308-8686	46R	8405-01-308-8709
36L	8405-01-308-8687	46L	8405-01-308-8710
36XL	8405-01-308-8688	46XL	8405-01-308-8711
38XS	8405-01-308-8689	48R	8405-01-308-8712
38S	8405-01-308-8690	48L	8405-01-308-8713
38R	8405-01-308-8691	48XL	8405-01-308-8714
38L	8405-01-308-8692	50R	8405-01-400-6106
38XL	8405-01-308-8693	52R	8405-01-400-6107
40XS	8405-01-308-8694	50L	8405-01-400-6117
40S	8405-01-308-8695	52L	8405-01-400-6118

WOMEN'S UNIFORM ITEMS

SECTION 2 FITTING OF WOMEN'S UNIFORMS

The Women's Army Service Uniform is composed of an Army Blue Shade 450 Coat, an Army Blue Shade 450 Skirt, and Army Blue 451 Slacks, an Army White 521 Long or Short Sleeve Shirt, necktab, and a Black Beret. A Coat, All Weather, Black Shade 385 may be worn over the uniform.

1. **Design.**

a. **Coat.** The design is a fitted, single breasted, four-button coat with side body construction, front bust seam from shoulder to top of pockets, slanted flap pockets, open notch collar, and two-piece sleeves with shoulder loops. The shoulder loops for the coat shall be buttoned down and have rounded edges at edge nearest the collar and have 1/8 inch wide gold cord edge braid attached. The back has a vent in the bottom of the center back seam and the inside of the coat is 3/8 lined, with a yoke back, fully lined sleeves, and one inside chest pocket. The coats shall have gold sleeve ornamentation attached to the bottom of the sleeves, 3 inches from bottom of hemmed sleeve. It is designed to fit slightly at the waist to conform to the individual's figure.

b. **Skirt.** The skirt is a dress type with a one-piece set-on waistband, a waistband extension piece on left side of waistband closure, a rubberized nonslip tape on inside of the waistband, a back slide fastener, two front and two back darts, an on seam waistband pocket on right front (with pocket opening on outside of skirt), a back open pleat finishing right over left. The lining shall be a free hanging full lining, attached to the skirt at waistband with a closed inverted pleat in the lining. It is designed to fit smoothly, but not tightly around hips, seat and waist, with a slight fullness for comfort.

c. **Slacks.** The slacks are a dress type with a sewn-on two-piece waistband with centerback outlet for alterability, five (5) belt loops, a hook and eye waistband closure, two front and two back darts, a french fly with slide fastener, straight on seam pockets and straight legs. The inside of the waistband shall have a rubberized nonslip tape. The leg front and back creases are treated with a permanent silicone adhesive bead. The slacks come in two classes, the Class 1 with a 1 inch wide ornamental braid attached on side seams, is worn by officers and enlisted personnel (E4 (Corporal) through E-9) and the Class 2, without ornamental braid is worn by enlisted personnel (E-1 through E-4 (Specialist)). They are designed to fit smoothly, but not tightly, around hips, seat, and waist, with a slight fullness for comfort. The rise is automatically built into the slacks and varies with different lengths.

d. **Shirts (Short or Long Sleeve).** The shirt is a tuck-in design. It shall have a two piece front with princess style seams and a one piece back. The shirt shall have a convertible collar with collar stays attached to the undercollar. The shirt shall have two button down tapered shoulder loops. The bottom hem and front facings shall be finished with an overedge stitch. The type I shirt shall have short sleeves. The type II shirt shall have long sleeves bound sleeve openings, sleeve pleats, and cuffs with two buttons for adjustment. Each shirt shall have three permanent creases on the back of shirt.

e. **Necktab.** The neck tab is one-piece with two pointed ends and a hook and loop adjustment closure strap.

f. **Beret.** The beret is a one piece knitted wool shell bound with leather and a drawcord through the binding. The beret has a flash sewn onto the badge stay. The beret is available lined or unlined.

g. **All Weather Coat.**

(1) All Weather Coat. The all weather coat is a six-button, double-breasted model with a belt. The coat has a convertible collar (button at neck), left front gun flap, shoulder loops, adjustable sleeve straps, and welt pockets with two inside hanging pockets. The back has a yoke and center vent. The coat is fully lined.

(2) Liner. The removable liner has bound edges, 1/2 raglan sleeves, 2 pass through pocket slits and center back vent, button loops at the bottom of each sleeve and zipper around the edge for attaching the liner to the coat.

2. **Materials:**

a. **Coat and Skirt.** 9.5 to 10.5 oz/linear yd., 55/45% polyester wool serge, Army Blue 450.

b. **Slacks.** 9.5 to 10.5 oz/linear yd., 55/45% polyester wool serge, Army Blue 451.

c. **Shirt (Short or Long Sleeve).** 5.0 ± 0.25 oz/sq yd., 65/35% polyester/cotton herringbone, durable press and stain resistant, Army White 521.

d. **Necktab.** 4.6 oz/sq yd., 65/35% polyester/cotton, Army Black 305.

e. **Beret.** 16.5 oz/sq yd., 100% wool, Army Black 1593.

f. **All Weather Coat.**

(1) **Coat.** 5.3 to 6.8 oz/sq yd., 65/35% polyester/cotton poplin, plain weave, water repellent treated, Army Black 385.

(2) **Liner.** 4.6 oz/sq yd., 0.4 inch thick 65/35% polyolefin/polyester batting between two layers of 1.5 ± 0.15 oz. sq yd. taffeta. The sleeves for the all weather coat shall be made from a 6.2 oz/sq yd. multifilament acetate faced, combed cotton backed satin weave material. Both materials shall match the shade of the basic material.

3. **Sizing System.**

a. **Coats.** The coats are available in two size increments from sizes 4 through 26. The coat sizes are related to the individuals chest, waist and height measurements; with three hip designations – Junior, Misses and Women’s and four height designations – Petite (P), Regular (R), Tall (T) and X-Tall (XT). Refer to Size Prediction Table (Table I) in Appendix C for available sizes.

b. **Skirt.** The skirts are available in two size increments from sizes 4 through 26. The skirt sizes are related to the individuals waist, hip and height measurements; with three hip designations – Junior, Misses and Women’s and four height designations – Petite (P), Regular (R), Tall (T) and X-Tall (XT). Refer to Size Prediction Table (Table II) in Appendix C for available sizes.

c. **Slacks.** The slacks are available in two size increments from sizes 4 through 26. The slack sizes are related to the individual’s waist, hip and height measurements; with three hip designations – Junior, Misses and Women’s and four height designations – Petite (P), Regular (R), Tall (T) and X-Tall (XT). Refer to Size Prediction Table (Table II) in Appendix C for available sizes.

d. **Shirts (Short or Long Sleeve).** The short sleeve shirts are available in sizes 4 through 26 with one sleeve length for all sizes. The long sleeve shirt is available in sizes 4 through 26 and in six sleeve lengths; 28 (X-Short (XS)); 29-1/2 (Short (S)), 31 (Regular (R)), 32-1/2 (Long (L)), 34 (X-Long (XL)) and 35-1/2 (XX-Long (XXL)). Refer to Size Prediction Table (Table III) in Appendix C for available sizes.

e. **Necktab.** The neck tab for the long and short sleeve shirts comes in one size fits all.

f. **Beret.** The beret is provided with 1/8 inch size increments from size 6-3/8 through 8-1/4. Refer to Size Prediction Table (Table IV) in Appendix A for available sizes.

g. **All Weather Coat.** The all weather coat is available in two-inch size increments from size 2 through 26 and is available in four lengths; Short (S), Regular (R), Long (L) and X-Long (XL). Refer to Size Prediction Table (Table V) in Appendix C for available sizes.

4. General Fitting Procedures.

a. Coat.

(1) Subgarments. Subgarments for the coat try-on are a bra, panties, hosiery, slacks or skirt and the long sleeve shirt.

(2) Measurements. The bust, waist, hip and height measurements are required for selection of the proper size and model try-on garment.

(3) Selection of Try-on Garment. Using the individual's bust, waist, hip and height measurements, refer to the Size Prediction Table (Table I) in Appendix C for selection of the initial try-on size. The hip measurement will determine if a Junior (J), Misses (M) or Women's (W) size is required. The height will determine the length of the coat.

(4) Alterations.

(a) Hem line. The coat hem line may be shortened no more than 1 inch. Shortening is authorized only when the coat is out of proportion to the individual's height. For example, if a short woman requires a regular length to fit her backwaist length, the coat will require shortening so the length is correctly proportioned for her height.

(b) Backwaist Length. The waistline may be raised or lowered by adjusting the side-back seams.

(c) Bust. The front bust seam may be taken in and front side body seams let out or taken in.

(d) Waist. Waist may be tapered or let out at side-front and side-back seams.

(e) Hip. Side-back seams may be adjusted to hip size, as long as the balance is maintained.

(f) Shoulders. The coat shoulders may be raised or lowered by adding or removing shoulder pads.

(g) Sleeves. The sleeves may be adjusted to reach a point one inch below the bottom of the wristbone. The sleeves of the white shirt should not show below the coat sleeves.

(h) Collar. In cases of long or short necks, raising or lowering the collar improves fit and appearance. This alteration consists of ripping out the seams on under and top collar, repositioning the collar or the back of the coat for the desired length, re-sewing the collar and pressing. The collar must not be raised or lowered over 1/4 inch.

(i) Button Alignment. The position of the buttons on the front of the coat may be adjusted no more than 1/4 inch to improve the front closure, as long as the row of buttons is straight from the top to bottom when buttoned, and the coat balance is maintained.

b. Skirt.

(1) Subgarments. Subgarments for the skirt try-on are a bra, panties, hosiery, the shirt and the oxford shoes.

(2) Measurements. The waist, hip, and height measurements are required for selection of the proper size and model try-on garment.

(3) Selection of Try-on Garment. Using the individual's waist, hip, and height measurements, refer to the Size Prediction Table (Table II) in Appendix C for selection of the initial try-on size. The hip measurement will determine if a Junior (J), Misses (M), or Women's (W) size is required. The height measurement determines the length of the skirt.

(4) Alterations.

(a) Hips, Waist and Waistband. Seams and waistband may be altered to hip and waist size as long as the skirt balance is maintained.

(b) Length. The skirt Length may be altered to desired length by adjusting the skirt hem. The finished hem should be uniform and 2-1/2 to 3 inches wide.

c. **Slacks.**

(1) Subgarments. Subgarments for the slacks try-on are a bra, panties, hosiery, the shirt, and the oxford shoes.

(2) Measurements. The waist, hip and height measurements are required for selection of the proper size and model try-on garment.

(3) Selection of Try-on Garment. Using the individual's waist, hip and height measurements, refer to the Size Prediction Table (Table II) in Appendix C for selection of the initial try-on size. The hip measurement will determine if a Junior (J), Misses (M), or Women's (W) size is required. The height measurement determines the length of the slacks.

(4) Alterations.

(a) Waist and Waistband. The waistband and darts may be altered as long as the slack balance is maintained. The two piece waistband has a center back outlet which can be opened and allows the slacks to be taken in or let out without having to remove the waistband.

(b) Length. Measure and mark both slack legs individually. No more than a two inch turn up is permissible. The front crease of the slacks will reach the top of the instep and be cut on a diagonal line to reach a point approximately midway between the top of the heel and the top of the oxford shoe in the back. The slacks may have a slight break in the front.

(c) Hip and Seat. Let out or take in at the back outlet to adjust hip and seat sides. The side seams may be adjusted to hip size. Side seams must be centered at the sides and hang straight to the bottom. Note that if the seat needs to be altered, the crotch of the slacks must also be altered.

(d) Crotch and Thighs. The crotch and thigh seams have an outlet. The outlet may be used to let out or take in the crotch and thigh areas to improve fit while maintaining the balance of the slacks.

d. **Shirts (Short or Long Sleeve).**

(1) Subgarments. Subgarments for try-on are undergarments normally worn (bra).

(2) Measurements. The bust, waist and sleeve lengths are required for selection of the proper size and model try-on garment. To obtain the full sleeve length, direct the individual being fitted to raise his arm parallel to the floor, bending it at the elbow to form a right angle with the palm of his hand facing the floor. The arm is then measured from the center of the back (parallel with the elbow) along the arm, around to the lower part of the wrist bone.

(3) Selection of Try-on Garment. Using the individual's bust, waist and sleeve length measurements, refer to the Size Prediction Table (Table III) in Appendix C for selection of the initial try-on size.

(4) Alterations.

(a) Front Princess and Side Seams. The women's shirts can be tapered in the front by taking in the front princess seams and side seams. When fitting extremely broad shouldered women, it may be necessary to select shirt one or two sizes larger than indicated and take in the side and front princess seams.

(b) Sleeves. Shortening of the shirt sleeves is acceptable for the long sleeve shirt only. The buttons on cuffs may be set over. Utilize both buttons to obtain the concept of fit prior to altering sleeve lengths.

e. **Necktab.** The necktab is a one size fits all.

f. **Beret.**

(1) Measurement. Place tape snugly around the largest part of the head, across the forehead and over temples, parallel to the ground. The woman's hair should be the length and style in which it will usually be worn.

(2) Selection of try-on size. Use the individual's actual measurement and refer to size prediction table (Table XX) in Appendix C for selection of the initial try on size.

(3) Alterations. Altering of the beret is not authorized.

f. **All Weather Coat.**

(1) Subgarments. The subgarments for the bust measurement are a bra and the long sleeve shirt. The Army Service Uniform with skirt is worn as the subgarment for the all weather coat try-on.

(2) Measurements. The bust and height measurements are needed to select try-on size and model.

(3) Selection of Try-on Garment. Attach all weather coat liner for try-on purposes. Using the individual's height and bust measurements, refer to size prediction table (Table IV) in Appendix C for size of the initial try-on garment. If the individual's measurements are close to the minimum or maximum indicated on the size prediction table, select two sizes for try-on. In either case, if the selected garment does not fit, try-on additional garments until the best fit is achieved prior to making alterations.

(4) Alterations.

(a) Hem line. The all weather coat hem line may be adjusted to about one inch longer than the skirt worn under it but not more than three inches below the midpoint of the knee (Fig. XX).

(b) Sleeves. The sleeves may be shortened or lengthened so sleeves will be about one inch longer than the sleeves of the Army Blue 450 uniform coat. When shortening the sleeves, measure and mark each sleeve individually.

(c) Button Alignment. The position of the buttons on the front of the all weather coat may be adjusted no more than 1/4-inch to improve the front closure as long as the row of buttons is straight from the top to bottom when buttoned, and the coat balance is maintained.

5. **Final Check for Proper Concept of Fit.** The uniform is designed to fit the figure easily with smooth tailored lines. While the individual is wearing the entire uniform (Fig. XX), check the following points:

a. **Coat.** The coat has been designed to look equally well over both slacks and skirt, hence the longer than average length. Completely button the coat before checking the following:

(1) Back and Shoulders. The coat should fit smoothly across the back and shoulders (Fig. 5).

(2) Bust. The coat should fit across the bust without strain (Fig. 5).

(3) Hips and Waist. The coat should fit easily over the hips and conform to the waistline curve without blousing. The bottom button of the coat should fall approximately one inch below the natural waistline. The coat front, below the waist, must overlap without pulling or gaping so the front of the coat will present a straight line from the top button to the coat hem. The back vent must also overlap without pulling or gaping (Fig. XX).

(4) Length. The coat is designed so that if the coat size is correct in other areas, the coat length, with few exceptions, will be correctly proportioned (Fig. 5).

(5) Sleeves. The sleeves of the coat should fall about one inch below the bottom of the wristbone (Fig. XX). The sleeves of the white shirt should not show beneath the coat sleeves.

b. **Skirt.** The skirt viewed from the front and back should continue the slender lines of the coat, tapered slightly at the sides.

(1) Waist and Hips. The skirt should fit snugly at the waist and smoothly over the hips so that it does not drape in folds. The center of the skirt waistband should be at the natural waistline.

(2) Length. The skirt length is determined by the individual's height, but must fall somewhere between one inch above and two inches below the mid-point of the knee (Fig. 6).

c. **Slacks.**

(1) Hips and Waist. The slacks must fit snugly at the waist and should have approximately 2 inches of ease over the hips. This shall be determined by pinching 1/2 inch excess cloth on the double on each side. The center of the waistband should be at the natural waistline. (Fig. 7). Side pockets must lay flat without bulging.

(2) Length. The bottom of the slacks will reach the top of the instep in the front, and reach a point approximately midway between the top of the heel and the top of the oxford shoe in the back. When wearing the optional pump, this figure may vary slightly depending on heel height (Fig.7). The slacks may have a slight break in the front.

(3) Crotch. The crotch of the slacks should not bind fit with a slight ease and allow for squatting and bending.

d. **Shirt (Short or Long Sleeve).** Completely button shirt, including cuffs of the long sleeve shirt, and check the following points:

(1) Collar. The shirt collar should fit the neck without bulging (Fig. 8).

(2) Back and Shoulders. The shirt should fit smoothly across the back and shoulders (Fig. 8) without tightness or wrinkles. Ease across back should be approximately 2 -1/2 inches.

There must be enough room around back and shoulders to allow free use of arms without discomfort.

(3) Bust. The shirt should fit over the bust without strain (Fig. 8) or gaping between buttons. There shall be 2-1/2 inches of ease at front. This shall be determined by pinching 1-1/4 inches excess cloth on the double on shirt front.

(4) Hips and Waist. The shirt should fit easily over the hips conforming to the waistline curve with minimal blousing. Ease at the waist should be 2-1/2 inches at each side seam. This shall be determined by pinching 1-1/4 inches excess cloth on the double at waist. The shirt front, below the waist, should overlap without pulling or gaping.

(5) Sleeves.

(a) Short Sleeve. The shirt is designed so that if the shirt size is correct in other areas, the sleeves will be correctly proportioned.

(b) Long Sleeve. The sleeve length should reach below the lower part of the wristbone (Fig. 8).

e. **Beret.** The beret should fit so the headband is straight across the forehead and 1 inch above the eyebrow. The excess material shall drape over to the right ear, extending to at least the top of the ear, and no lower than the middle of the ear. (see Figure 3)

f. **All Weather Coat.** To ensure proper concept of fit, attach line and completely button the coat. Check the following points:

(1) Collar. When buttoned, the all weather coat must fit close at the neck without gaping or overlapping. The collar must cover the collar of all subgarments (Fig. 9).

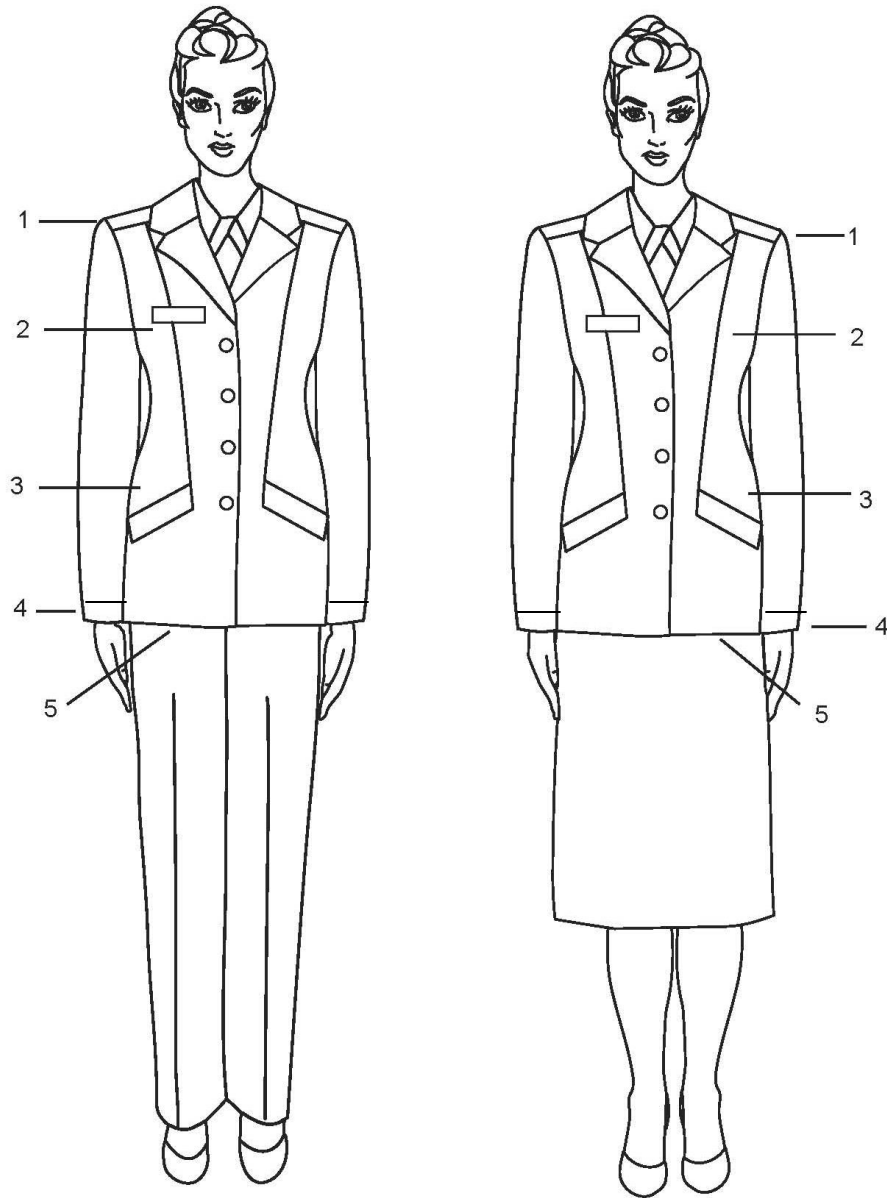
(2) Back, Shoulders and Bust. The all weather coat must fit comfortably over the shoulders and bust and lie smoothly across the back. When properly fitted, the all weather coat will allow free use of the arms without pulling or giving discomfort to the wearer (Fig. 9).

(3) Hips and Waist. The all weather coat must hang freely from the shoulders without waist suppression or tightness around the hips (Fig. 9).

(4) Length. The all weather coat should fall approximately 1-1/2 inches below the midpoint of the knee and must cover the skirt worn under it (Fig. 9).

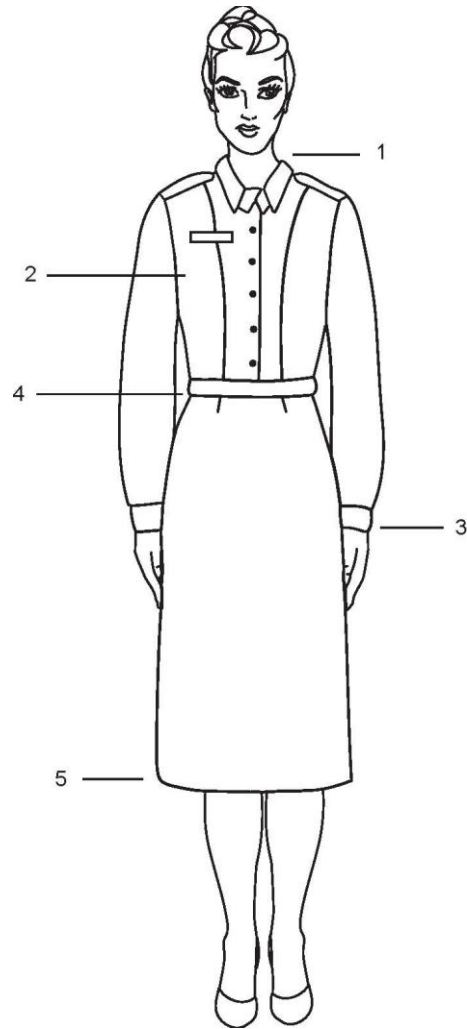
(5) Sleeves. The all weather coat sleeves must be 1/2-inch longer than and cover the sleeves of all subgarments (Fig. 9).

(6) Belt. The belt shall be at natural waistline.



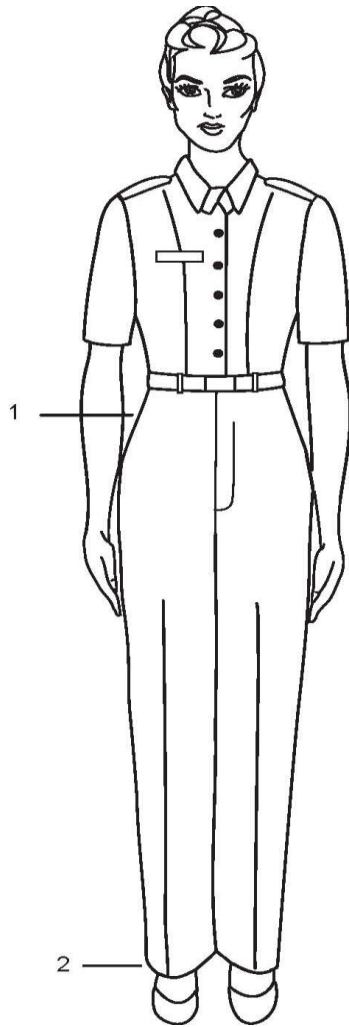
- | | |
|--|---|
| <ol style="list-style-type: none"> 1. Coat fits smoothly across shoulders. 2. Coat fits across bust without strain. 3. Coat fits easily over the hips and conforms to waistline curve without blousing. | <ol style="list-style-type: none"> 4. Sleeves should fall one inch below the bottom of the wristbone. 5. Coat length is determined by individuals back waist measurement. |
|--|---|

FIGURE 5. PROPER FIT AND WAR OF WOMEN'S UNIFORM COAT AND SLACKS/SKIRT



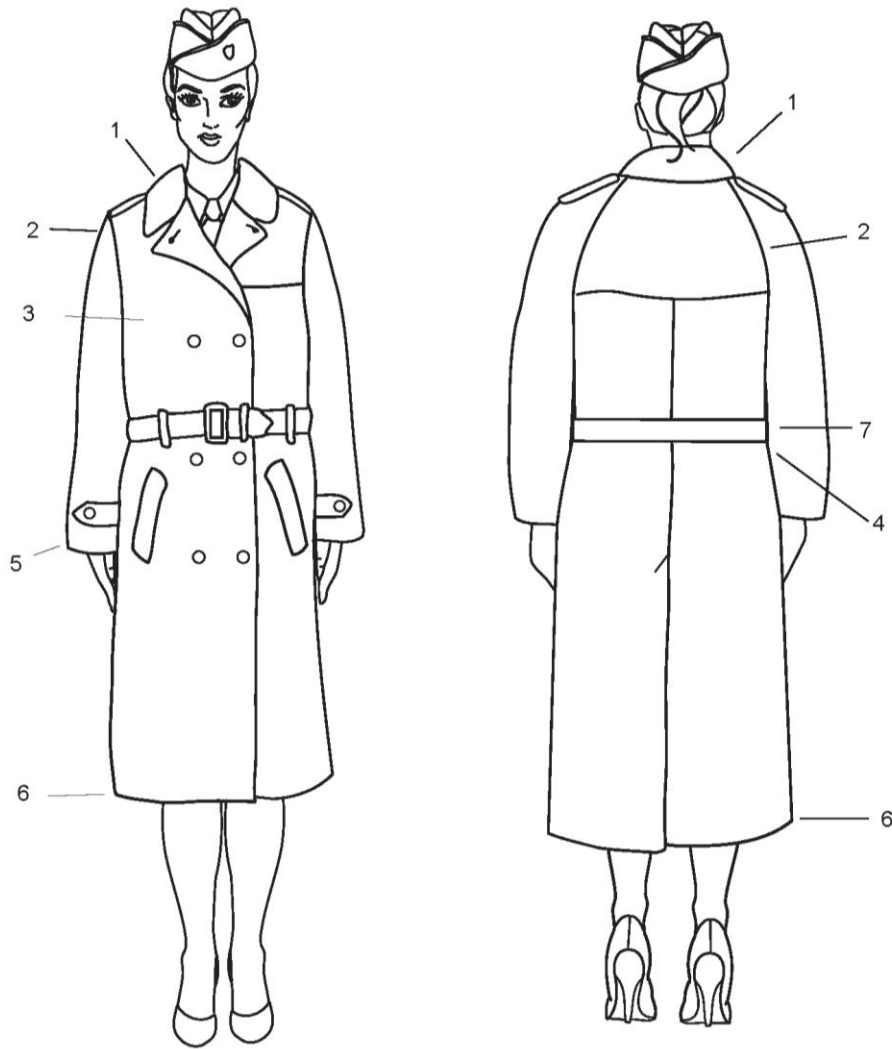
1. Collar should fit without bulging.
2. Shirt should fit over the bust without strain.
3. For the long sleeve shirt, length should reach below the lower part of the wristbone.
4. The skirt should fit snugly at waist and smoothly over the hips.
5. Skirt should fall between one inch above and two inches below the midpoint of the knee.
6. Length of back vent shall not be less than 5 inches long.

FIGURE 6. PROPER FIT AND WAR OF WOMEN'S UNIFORM SHIRT AND SKIRT



1. Slacks fit snugly at the waist and smoothly over the hips.
2. The bottom of the slacks will reach the top of the instep in the front and reach a point approximately midway between the top of the heel and the top of the oxford shoe in the back. The slacks may have a slight break in the front.

FIGURE 7. PROPER FIT AND WEAR OF WOMEN'S UNIFORM SHIRT AND SLACKS



1. Coat collar must cover the collar of all subgarments.
2. Coat fits comfortably across shoulders and smoothly across back.
3. Coat fits comfortably across bust.
4. No waist suppression or tightness around hips.
5. Sleeves must cover all subgarments.
6. Coat must fall approximately 1/2 inch below midpoint of the knee and, when applicable, cover the skirt worn under it.
7. Belt at natural waistline.

FIGURE 8. PROPER FIT AND WAR OF WOMEN'S ALL WEATHER COAT

APPENDIX C

SIZE PREDICTION CHARTS

FOR WOMEN'S ITEMS

Table I. Size Prediction Table for Women's Coats

SIZE	BUST			WAIST			HIP		
	J	M	W	J	M	W	J	M	W
4	32-1/2	32-1/2	32-1/2	24-1/2	24-1/2	24-1/2	33	35	37
6	33-1/2	33-1/2	33-1/2	25-1/2	25-1/2	25-1/2	34	36	38
8	34-1/2	34-1/2	34-1/2	26-1/2	26-1/2	26-1/2	35	37	39
10	36	36	36	28	28	28	36-1/2	38-1/2	40-1/2
12	37-1/2	37-1/2	37-1/2	29-1/2	29-1/2	29-1/2	38	40	42
14	39	39	39	31	31	31	39-1/2	41-1/2	43-1/2
16	41	41	41	33	33	33	41-1/2	43-1/2	45-1/2
18	43	43	43	35	35	35	43-1/2	45-1/2	47-1/2
20	45	45	45	37	37	37	45-1/2	47-1/2	49-1/2
22	47	47	47	39	39	39	47-1/2	49-1/2	51-1/2
24	--	49	--	41	41	41	49-1/2	51-1/2	53-1/2
26	--	51	--	43	43	43	51-1/2	53-1/2	55-1/2

Length: Petite (P) = Less than 63"
 Regular (R) = 63-1/2" - 67"
 Tall (T) = 67" - 70-1/2"
 X-Tall (XT) = More than 70-1/2"

Table II. Size Prediction Table for Women's Skirts and Slacks

BODY DIMENSION (INCHES)	HEIGHT LESS THAN 63" (P)	HEIGHT 63-1/2" – 67" (R)	HEIGHT MORE THAN 67" (T)
WAIST LESS THAN 24-1/2 HIP LESS THAN 33 HIP - 33 - 35	4JP 4MP	***** 4MR	*****
WAIST - 24-1/2 - 25-1/2 HIP - LESS THAN 34 HIP - 34 - 36 HIP - 36 - 38	6JP 6MP 6WP	***** 6MR 6WR	***** 6MT 6WT
WAIST - 25-1/2 - 26-1/2 HIP - LESS THAN 35 HIP - 35 - 37 HIP - 37 - 39	8JP 8MP 8WP	***** 8MR 8WR	***** 8MT 8WT
WAIST - 26-1/2 - 28 HIP - LESS THAN 36-1/2 HIP - 36-1/2 - 38-1/2 HIP - 38-1/2 - 40-1/2	10JP 10MP 10WP	10JR 10MR 10WR	10JT 10MT 10WT
WAIST - 28 - 29-1/2 HIP - LESS THAN 38 HIP - 38 - 40 HIP - 40 - 42	12JP 12MP 12WP	12JR 12MR 12WR	12JT 12MT 12WT
WAIST - 29-1/2 - 31 HIP - LESS THAN 39-1/2 HIP - 39-1/2 - 41-1/2 HIP - 41-1/2 - 43-1/2	14JP 14MP 14WP	14JR 14MR 14WR	14JT 14MT 14WT
WAIST - 31 - 33 HIP - LESS THAN 41-1/2 HIP - 41-1/2 - 43-1/2 HIP - 43-1/2 - 45-1/2	16JP 16MP 16WP	16JR 16MR 16WR	16JT 16MT 16WT
WAIST - 33 – 35 HIP - LESS THAN 43-1/2 HIP - 43-1/2 – 45-1/2 HIP - 45-1/2 - 47-1/2	***** 18MP 18WP	18JR 18MR 18WR	***** 18MT 18WT
WAIST - 35 – 37 HIP - LESS THAN 45-1/2 HIP - 45-1/2 - 47-1/2 HIP - 47-1/2 - 49-1/2	***** ***** 20WP	20JR 20MR 20WR	***** 20MT 20WT
WAIST - 37 - 39 HIP - LESS THAN 47-1/2 HIP - 47-1/2 – 49-1/2 HIP - 49-1/2 – 51-1/2	***** ***** *****	22JR 22MR 22WR	***** 22MT 22WT
WAIST - 39 - 41 HIP - 49-1/2 - 51-1/2 HIP - 51-1/2 – 53-1/2	***** *****	24MR 24WR	24MT 24WT
WAIST - 41 - 43 HIP - 51-1/2 - 53-1/2 HIP - 53-1/2 – 55-1/2	***** *****	26MR *****	26MT 26WT

P= Petite; R=Regular; T= Tall

Table III. Size Prediction Table for Women's Shirts

BODY DIMENSIONS (INCHES)	SLEEVE LENGTH 28 (XS)	SLEEVE LENGTH 29-1/2 (S)	SLEEVE LENGTH 31 (R)	SLEEVE LENGTH 32-1/2 (L)	SLEEVE LENGTH 34 (XL)	SLEEVE LENGTH 35-1/2 (XXL)	SHORT SLEEVE SHIRT
BUST LESS THAN 32-1/2 WAIST LESS THAN 24-1/2	4XS	4S	4R	4L	*****	*****	4
BUST - 32-1/2 - 33-1/2 WAIST - 24-1/2 - 25-1/2	6XS	6S	6R	6L	*****	*****	6
BUST - 33-1/2 - 34-1/2 WAIST - 25-1/2 - 26-1/2	8XS	8S	8R	8L	*****	*****	8
BUST - 34-1/2 - 36 WAIST - 26-1/2 - 28	10XS	10S	10R	10L	10XL	*****	10
BUST - 36 - 37-1/2 WAIST - 28 - 29-1/2	*****	12S	12R	12L	12XL	12XXL	12
BUST - 37-1/2 - 39 WAIST - 29-1/2 - 31	*****	14S	14R	14L	14XL	14XXL	14
BUST - 39 - 41 WAIST - 31 - 33	*****	16S	16R	16L	16XL	16XXL	16
BUST - 41 - 43 WAIST - 33 - 35	*****	18S	18R	18L	18XL	18XXL	18
BUST - 43 - 45 WAIST - 35 - 37	*****	20S	20R	20L	20XL	20XXL	20
BUST - 45 - 47 WAIST - 37 - 39	*****	*****	22R	22L	22XL	22XXL	22
BUST - 47 - 49 WAIST - 39 - 41	*****	*****	24R	24L	24XL	24XXL	24
BUST - 49 - 51 WAIST - 41 - 43	*****	*****	26R	26L	26XL	26XXL	26

XS = X-Short; S=Short; R=Regular; L=Long; XL=X-Long and XXL=XX-Long

Table IV. Size Prediction Table for Women's All-Weather Coat

Bust (inches)	Height			
	5'0" - 5'3"	5'3" - 5'8"	5'8" - 5'11"	5'11" - Up
29-31	4S	4R	4L	--
31-32	6S	6R	6L	--
32-33	8S	8R	8L	--
33 - 34-1/2	10S	10R	10L	--
34-1/2 - 36	12S	12R	12L	12XL
35 - 37-1/2	14S	14R	14L	14XL
37-1/2 - 39-1/2	16S	16R	16L	16XL
39-1/2 - 41-1/2	18S	18R	18L	18XL
41-1/2 - 43-1/2	20S	20R	20L	20XL
43-1/2 - 45-1/2	--	22R	22L	22XL
45-1/2 - 47-1/2	--	24R	--	24XL
47-1/2 - 49-1/2	--	26R	--	26XL

S=Short; R=Regular; L=Long and XL=X-Long

APPENDIX D

NATIONAL STOCK NUMBERS (NSNs)

FOR WOMEN'S ITEMS

NSNs for Women's Coats

COAT,WOMAN'S SIZE = 4JP	8410015522250	COAT,WOMAN'S SIZE = 14MP	8410015522312
COAT,WOMAN'S SIZE = 4MP	8410015522295	COAT,WOMAN'S SIZE = 14MR	8410015522314
COAT,WOMAN'S SIZE = 4MR	8410015522296	COAT,WOMAN'S SIZE = 14MT	8410015522315
COAT,WOMAN'S SIZE = 4WP	8410015522474	COAT,WOMAN'S SIZE = 14WP	8410015522681
COAT,WOMAN'S SIZE = 6JP	8410015522253	COAT,WOMAN'S SIZE = 14WR	8410015522682
COAT,WOMAN'S SIZE = 6MP	8410015522297	COAT,WOMAN'S SIZE = 14WT	8410015522684
COAT,WOMAN'S SIZE = 6MR	8410015522298	COAT,WOMAN'S SIZE = 14WXT	8410015522685
COAT,WOMAN'S SIZE = 6MT	8410015522299	COAT,WOMAN'S SIZE = 16JP	8410015522277
COAT,WOMAN'S SIZE = 6WP	8410015522473	COAT,WOMAN'S SIZE = 16JR	8410015522286
COAT,WOMAN'S SIZE = 6WR	8410015522475	COAT,WOMAN'S SIZE = 16JT	8410015522288
COAT,WOMAN'S SIZE = 6WT	8410015522477	COAT,WOMAN'S SIZE = 16JXT	8410015522291
COAT,WOMAN'S SIZE = 8JP	8410015522252	COAT,WOMAN'S SIZE = 16MP	8410015522316
COAT,WOMAN'S SIZE = 8JR	8410015522254	COAT,WOMAN'S SIZE = 16MR	8410015522319
COAT,WOMAN'S SIZE = 8MP	8410015522360	COAT,WOMAN'S SIZE = 16MT	8410015522320
COAT,WOMAN'S SIZE = 8MR	8410015522361	COAT,WOMAN'S SIZE = 16MXT	8410015522321
COAT,WOMAN'S SIZE = 8MT	8410015522302	COAT,WOMAN'S SIZE = 16WP	8410015522686
COAT,WOMAN'S SIZE = 8WP	8410015522480	COAT,WOMAN'S SIZE = 16WR	8410015522687
COAT,WOMAN'S SIZE = 8WR	8410015522481	COAT,WOMAN'S SIZE = 16WT	8410015522688
COAT,WOMAN'S SIZE = 8WT	8410015522483	COAT,WOMAN'S SIZE = 16WXT	8410015522689
COAT,WOMAN'S SIZE = 10JP	8410015522255	COAT,WOMAN'S SIZE = 18JR	8410015522290
COAT,WOMAN'S SIZE = 10JR	8410015522258	COAT,WOMAN'S SIZE = 18MR	8410015522322
COAT,WOMAN'S SIZE = 10JT	8410015522260	COAT,WOMAN'S SIZE = 18MT	8410015522324
COAT,WOMAN'S SIZE = 10MP	8410015522301	COAT,WOMAN'S SIZE = 18MXT	8410015522325
COAT,WOMAN'S SIZE = 10MR	8410015522303	COAT,WOMAN'S SIZE = 18WR	8410015522691
COAT,WOMAN'S SIZE = 10MT	8410015522305	COAT,WOMAN'S SIZE = 18WT	8410015522692
COAT,WOMAN'S SIZE = 10WP	8410015522482	COAT,WOMAN'S SIZE = 18WXT	8410015522693
COAT,WOMAN'S SIZE = 10WR	8410015522485	COAT,WOMAN'S SIZE = 20JR	8410015522292
COAT,WOMAN'S SIZE = 10WT	8410015522484	COAT,WOMAN'S SIZE = 20MR	8410015522326
COAT,WOMAN'S SIZE = 12JP	8410015522262	COAT,WOMAN'S SIZE = 20MT	8410015522327
COAT,WOMAN'S SIZE = 12JR	8410015522265	COAT,WOMAN'S SIZE = 20MXT	8410015522329
COAT,WOMAN'S SIZE = 12JT	8410015522266	COAT,WOMAN'S SIZE = 20WR	8410015522694
COAT,WOMAN'S SIZE = 12JXT	8410015522269	COAT,WOMAN'S SIZE = 20WT	8410015522695
COAT,WOMAN'S SIZE = 12MP	8410015522306	COAT,WOMAN'S SIZE = 22JR	8410015522293
COAT,WOMAN'S SIZE = 12MR	8410015522310	COAT,WOMAN'S SIZE = 22MR	8410015522330
COAT,WOMAN'S SIZE = 12MT	8410015522311	COAT,WOMAN'S SIZE = 22MT	8410015522331
COAT,WOMAN'S SIZE = 12WP	8410015522486	COAT,WOMAN'S SIZE = 22WR	8410015522696
COAT,WOMAN'S SIZE = 12WR	8410015522488	COAT,WOMAN'S SIZE = 22WT	8410015522697
COAT,WOMAN'S SIZE = 12WT	8410015522679	COAT,WOMAN'S SIZE = 24MR	8410015522332
COAT,WOMAN'S SIZE = 12WXT	8410015522680	COAT,WOMAN'S SIZE = 24MT	8410015522333
COAT,WOMAN'S SIZE = 14JP	8410015522270	COAT,WOMAN'S SIZE = 24WT	8410015522698
COAT,WOMAN'S SIZE = 14JR	8410015522272	COAT,WOMAN'S SIZE = 26MR	8410015522335
COAT,WOMAN'S SIZE = 14JT	8410015522275	COAT,WOMAN'S SIZE = 26MT	8410015522336
COAT,WOMAN'S SIZE = 14JXT	8410015522276	COAT,WOMAN'S SIZE = 26WT	8410015522700

NSNs for Women's Slacks W/O Braid

SLACKS, WOMEN'S SIZE = 4JP-CL2	8410015524057	SLACKS, WOMEN'S SIZE = 14WR-CL2	8410015524199
SLACKS, WOMEN'S SIZE = 4MP-CL2	8410015524103	SLACKS, WOMEN'S SIZE = 14WT-CL2	8410015524200
SLACKS, WOMEN'S SIZE = 4MR-CL2	8410015524104	SLACKS, WOMEN'S SIZE = 16JP-CL2	8410015524091
SLACKS, WOMEN'S SIZE = 6JP-CL2	8410015524065	SLACKS, WOMEN'S SIZE = 16JR-CL2	8410015524092
SLACKS, WOMEN'S SIZE = 6MP-CL2	8410015524105	SLACKS, WOMEN'S SIZE = 16JT-CL2	8410015524093
SLACKS, WOMEN'S SIZE = 6MR-CL2	8410015524106	SLACKS, WOMEN'S SIZE = 16MP-CL2	8410015524134
SLACKS, WOMEN'S SIZE = 6MT-CL2	8410015524108	SLACKS, WOMEN'S SIZE = 16MR-CL2	8410015524135
SLACKS, WOMEN'S SIZE = 6WP-CL2	8410015524159	SLACKS, WOMEN'S SIZE = 16MT-CL2	8410015524136
SLACKS, WOMEN'S SIZE = 6WR-CL2	8410015524160	SLACKS, WOMEN'S SIZE = 16WP-CL2	8410015524202
SLACKS, WOMEN'S SIZE = 6WT-CL2	8410015524162	SLACKS, WOMEN'S SIZE = 16WR-CL2	8410015524203
SLACKS, WOMEN'S SIZE = 8JP-CL2	8410015524068	SLACKS, WOMEN'S SIZE = 16WT-CL2	8410015524204
SLACKS, WOMEN'S SIZE = 8MP-CL2	8410015524109	SLACKS, WOMEN'S SIZE = 18JR-CL2	8410015524095
SLACKS, WOMEN'S SIZE = 8MR-CL2	8410015524115	SLACKS, WOMEN'S SIZE = 18JT-CL2	8410015524096
SLACKS, WOMEN'S SIZE = 8MT-CL2	8410015524116	SLACKS, WOMEN'S SIZE = 18MR-CL2	8410015524137
SLACKS, WOMEN'S SIZE = 8WP-CL2	8410015524164	SLACKS, WOMEN'S SIZE = 18MT-CL2	8410015524154
SLACKS, WOMEN'S SIZE = 8WR-CL2	8410015524182	SLACKS, WOMEN'S SIZE = 18WR-CL2	8410015524206
SLACKS, WOMEN'S SIZE = 8WT-CL2	8410015524184	SLACKS, WOMEN'S SIZE = 18WP-CL2	8410015524207
SLACKS, WOMEN'S SIZE = 10JP-CL2	8410015524069	SLACKS, WOMEN'S SIZE = 18WT-CL2	8410015524213
SLACKS, WOMEN'S SIZE = 10JR-CL2	8410015524070	SLACKS, WOMEN'S SIZE = 20JR-CL2	8410015524097
SLACKS, WOMEN'S SIZE = 10JT-CL2	8410015524075	SLACKS, WOMEN'S SIZE = 20MR-CL2	8410015524144
SLACKS, WOMEN'S SIZE = 10MP-CL2	8410015524118	SLACKS, WOMEN'S SIZE = 20MT-CL2	8410015524145
SLACKS, WOMEN'S SIZE = 10MR-CL2	8410015524119	SLACKS, WOMEN'S SIZE = 20WP-CL2	8410015524214
SLACKS, WOMEN'S SIZE = 10MT-CL2	8410015524120	SLACKS, WOMEN'S SIZE = 20WR-CL2	8410015524216
SLACKS, WOMEN'S SIZE = 10WP-CL2	8410015524186	SLACKS, WOMEN'S SIZE = 20WT-CL2	8410015524215
SLACKS, WOMEN'S SIZE = 10WR-CL2	8410015524187	SLACKS, WOMEN'S SIZE = 22JR-CL2	8410015524099
SLACKS, WOMEN'S SIZE = 10WT-CL2	8410015524188	SLACKS, WOMEN'S SIZE = 22MR-CL2	8410015524146
SLACKS, WOMEN'S SIZE = 12JP-CL2	8410015524074	SLACKS, WOMEN'S SIZE = 22MT-CL2	8410015524147
SLACKS, WOMEN'S SIZE = 12JR-CL2	8410015524085	SLACKS, WOMEN'S SIZE = 22WR-CL2	8410015524217
SLACKS, WOMEN'S SIZE = 12JT-CL2	8410015524076	SLACKS, WOMEN'S SIZE = 22WT-CL2	8410015524218
SLACKS, WOMEN'S SIZE = 12MP-CL2	8410015524121	SLACKS, WOMEN'S SIZE = 24MR-CL2	8410015524149
SLACKS, WOMEN'S SIZE = 12MR-CL2	8410015524124	SLACKS, WOMEN'S SIZE = 24MT-CL2	8410015524150
SLACKS, WOMEN'S SIZE = 12MT-CL2	8410015524127	SLACKS, WOMEN'S SIZE = 24WR-CL2	8410015524219
SLACKS, WOMEN'S SIZE = 12WP-CL2	8410015524189	SLACKS, WOMEN'S SIZE = 24WT-CL2	8410015524220
SLACKS, WOMEN'S SIZE = 12WR-CL2	8410015524193	SLACKS, WOMEN'S SIZE = 26MR-CL2	8410015524152
SLACKS, WOMEN'S SIZE = 12WT-CL2	8410015524195	SLACKS, WOMEN'S SIZE = 26MT-CL2	8410015524153
SLACKS, WOMEN'S SIZE = 14JP-CL2	8410015524079	SLACKS, WOMEN'S SIZE = 26WT-CL2	8410015524222
SLACKS, WOMEN'S SIZE = 14JR-CL2	8410015524080		
SLACKS, WOMEN'S SIZE = 14JT-CL2	8410015524083		
SLACKS, WOMEN'S SIZE = 14MP-CL2	8410015524128		
SLACKS, WOMEN'S SIZE = 14MR-CL2	8410015524132		
SLACKS, WOMEN'S SIZE = 14MT-CL2	8410015524133		
SLACKS, WOMEN'S SIZE = 14WP-CL2	8410015524196		

NSNs for Women's Slacks, W/Braid

SLACKS, WOMEN'S SIZE = 4JP-CL 1	8410015524554	SLACKS, WOMEN'S SIZE = 14WR-CL 1	8410015524701
SLACKS, WOMEN'S SIZE = 4MP-CL 1	8410015524639	SLACKS, WOMEN'S SIZE = 14WT-CL 1	8410015524703
SLACKS, WOMEN'S SIZE = 4MR-CL 1	8410015524641	SLACKS, WOMEN'S SIZE = 16JP-CL 1	8410015524629
SLACKS, WOMEN'S SIZE = 6JP-CL 1	8410015524616	SLACKS, WOMEN'S SIZE = 16JR-CL 1	8410015524631
SLACKS, WOMEN'S SIZE = 6MP-CL 1	8410015524643	SLACKS, WOMEN'S SIZE = 16JT-CL 1	8410015524632
SLACKS, WOMEN'S SIZE = 6MR-CL 1	8410015524644	SLACKS, WOMEN'S SIZE = 16MP-CL 1	8410015524666
SLACKS, WOMEN'S SIZE = 6MT-CL 1	8410015524646	SLACKS, WOMEN'S SIZE = 16MR-CL 1	8410015524672
SLACKS, WOMEN'S SIZE = 6WP-CL 1	8410015524688	SLACKS, WOMEN'S SIZE = 16MT-CL 1	8410015524671
SLACKS, WOMEN'S SIZE = 6WR-CL 1	8410015524690	SLACKS, WOMEN'S SIZE = 16WP-CL 1	8410015524704
SLACKS, WOMEN'S SIZE = 6WT-CL 1	8410015524691	SLACKS, WOMEN'S SIZE = 16WR-CL 1	8410015524706
SLACKS, WOMEN'S SIZE = 8JP-CL 1	8410015524615	SLACKS, WOMEN'S SIZE = 16WT-CL 1	8410015524708
SLACKS, WOMEN'S SIZE = 8MP-CL 1	8410015524652	SLACKS, WOMEN'S SIZE = 18JR-CL 1	8410015524633
SLACKS, WOMEN'S SIZE = 8MR-CL 1	8410015524653	SLACKS, WOMEN'S SIZE = 18JT-CL 1	8410015524634
SLACKS, WOMEN'S SIZE = 8MT-CL 1	8410015524654	SLACKS, WOMEN'S SIZE = 18MR-CL 1	8410015524673
SLACKS, WOMEN'S SIZE = 8WP-CL 1	8410015524692	SLACKS, WOMEN'S SIZE = 18MT-CL 1	8410015524674
SLACKS, WOMEN'S SIZE = 8WR-CL 1	8410015524693	SLACKS, WOMEN'S SIZE = 18WP-CL 1	8410015524778
SLACKS, WOMEN'S SIZE = 8WT-CL 1	8410015524694	SLACKS, WOMEN'S SIZE = 18WR-CL 1	8410015524922
SLACKS, WOMEN'S SIZE = 10JP-CL 1	8410015524618	SLACKS, WOMEN'S SIZE = 18WT-CL 1	8410015524997
SLACKS, WOMEN'S SIZE = 10JR-CL 1	8410015524620	SLACKS, WOMEN'S SIZE = 20JR-CL 1	8410015524636
SLACKS, WOMEN'S SIZE = 10JT-CL 1	8410015524619	SLACKS, WOMEN'S SIZE = 20MR-CL 1	8410015524675
SLACKS, WOMEN'S SIZE = 10MP-CL 1	8410015524655	SLACKS, WOMEN'S SIZE = 20MT-CL 1	8410015524676
SLACKS, WOMEN'S SIZE = 10MR-CL 1	8410015524657	SLACKS, WOMEN'S SIZE = 20WP-CL 1	8410015525052
SLACKS, WOMEN'S SIZE = 10MT-CL 1	8410015524658	SLACKS, WOMEN'S SIZE = 20WR-CL 1	8410015525053
SLACKS, WOMEN'S SIZE = 10WP-CL 1	8410015524695	SLACKS, WOMEN'S SIZE = 20WT-CL 1	8410015525054
SLACKS, WOMEN'S SIZE = 10WR-CL 1	8410015524696	SLACKS, WOMEN'S SIZE = 22JR-CL 1	8410015524635
SLACKS, WOMEN'S SIZE = 10WT-CL 1	8410015524697	SLACKS, WOMEN'S SIZE = 22MR-CL 1	8410015524678
SLACKS, WOMEN'S SIZE = 12JP-CL 1	8410015524621	SLACKS, WOMEN'S SIZE = 22MT-CL 1	8410015524679
SLACKS, WOMEN'S SIZE = 12JR-CL 1	8410015524622	SLACKS, WOMEN'S SIZE = 22WR-CL 1	8410015525055
SLACKS, WOMEN'S SIZE = 12JT-CL 1	8410015524623	SLACKS, WOMEN'S SIZE = 22WT-CL 1	8410015525056
SLACKS, WOMEN'S SIZE = 12MP-CL 1	8410015524659	SLACKS, WOMEN'S SIZE = 24MR-CL 1	8410015524680
SLACKS, WOMEN'S SIZE = 12MR-CL 1	8410015524660	SLACKS, WOMEN'S SIZE = 24MT-CL 1	8410015524682
SLACKS, WOMEN'S SIZE = 12MT-CL 1	8410015524662	SLACKS, WOMEN'S SIZE = 24WR-CL 1	8410015525057
SLACKS, WOMEN'S SIZE = 12WP-CL 1	8410015524698	SLACKS, WOMEN'S SIZE = 24WT-CL 1	8410015525058
SLACKS, WOMEN'S SIZE = 12WR-CL 1	8410015524699	SLACKS, WOMEN'S SIZE = 26MR-CL 1	8410015524684
SLACKS, WOMEN'S SIZE = 12WT-CL 1	8410015524700	SLACKS, WOMEN'S SIZE = 26MT-CL 1	8410015524685
SLACKS, WOMEN'S SIZE = 14JT-CL1	8410015524628	SLACKS, WOMEN'S SIZE = 26WT-CL 1	8410015525061
SLACKS, WOMEN'S SIZE = 14JP-CL 1	8410015524625		
SLACKS, WOMEN'S SIZE = 14JR-CL 1	8410015524626		
SLACKS, WOMEN'S SIZE = 14MP-CL 1	8410015524663		
SLACKS, WOMEN'S SIZE = 14MR-CL 1	8410015524664		
SLACKS, WOMEN'S SIZE = 14MT-CL 1	8410015524665		
SLACKS, WOMEN'S SIZE = 14WP-CL 1	8410015524702		

NSNs for Women's Skirt

SKIRT,WOMAN'S SIZE = 4JP	8410015514329	SKIRT,WOMAN'S SIZE = 14WR	8410015520398
SKIRT,WOMAN'S SIZE = 4MP	8410015516234	SKIRT,WOMAN'S SIZE = 14WT	8410015520677
SKIRT,WOMAN'S SIZE = 4MR	8410015519199	SKIRT,WOMAN'S SIZE = 16JP	8410015514643
SKIRT,WOMAN'S SIZE = 6JP	8410015514332	SKIRT,WOMAN'S SIZE = 16JR	8410015515024
SKIRT, WOMAN'S SIZE = 6MP	8410015814847	SKIRT,WOMAN'S SIZE = 16JT	8410015516209
SKIRT,WOMAN'S SIZE = 6MR	8410015519229	SKIRT,WOMAN'S SIZE = 16MP	8410015517463
SKIRT,WOMAN'S SIZE = 6MT	8410015519754	SKIRT,WOMAN'S SIZE = 16MR	8410015519279
SKIRT,WOMAN'S SIZE = 6WP	8410015520237	SKIRT,WOMAN'S SIZE = 16MT	8410015520183
SKIRT,WOMAN'S SIZE = 6WR	8410015520357	SKIRT,WOMAN'S SIZE = 16WP	8410015520330
SKIRT,WOMAN'S SIZE = 6WT	8410015520612	SKIRT,WOMAN'S SIZE = 16WR	8410015520399
SKIRT,WOMAN'S SIZE = 8JP	8410015514501	SKIRT,WOMAN'S SIZE = 16WT	8410015520697
SKIRT,WOMAN'S SIZE = 8MP	8410015517410	SKIRT,WOMAN'S SIZE = 18JR	8410015515695
SKIRT,WOMAN'S SIZE = 8MR	8410015519238	SKIRT,WOMAN'S SIZE = 18JT	8410015516228
SKIRT,WOMAN'S SIZE = 8MT	8410015519759	SKIRT,WOMAN'S SIZE = 18MR	8410015519313
SKIRT,WOMAN'S SIZE = 8WP	8410015520240	SKIRT,WOMAN'S SIZE = 18MT	8410015520184
SKIRT,WOMAN'S SIZE = 8WR	8410015520363	SKIRT,WOMAN'S SIZE = 18WP	8410015520341
SKIRT,WOMAN'S SIZE = 8WT	8410015520613	SKIRT,WOMAN'S SIZE = 18WR	8410015520400
SKIRT,WOMAN'S SIZE = 10JP	8410015514517	SKIRT,WOMAN'S SIZE = 18WT	8410015520702
SKIRT,WOMAN'S SIZE = 10JR	8410015514668	SKIRT,WOMAN'S SIZE = 20JR	8410015515935
SKIRT,WOMAN'S SIZE = 10JT	8410015515998	SKIRT,WOMAN'S SIZE = 20MR	8410015519698
SKIRT,WOMAN'S SIZE = 10MP	8410015517432	SKIRT,WOMAN'S SIZE = 20MT	8410015520187
SKIRT,WOMAN'S SIZE = 10MR	8410015519248	SKIRT,WOMAN'S SIZE = 20WP	8410015520348
SKIRT,WOMAN'S SIZE = 10MT	8410015519766	SKIRT,WOMAN'S SIZE = 20WR	8410015541200
SKIRT,WOMAN'S SIZE = 10WP	8410015520252	SKIRT,WOMAN'S SIZE = 20WT	8410015520707
SKIRT,WOMAN'S SIZE = 10WR	8410015520370	SKIRT,WOMAN'S SIZE = 22JR	8410015515943
SKIRT,WOMAN'S SIZE = 10WT	8410015520653	SKIRT,WOMAN'S SIZE = 22MR	8410015519707
SKIRT,WOMAN'S SIZE = 12JP	8410015514613	SKIRT,WOMAN'S SIZE = 22MT	8410015520189
SKIRT,WOMAN'S SIZE = 12JR	8410015514705	SKIRT,WOMAN'S SIZE = 22WR	8410015520598
SKIRT,WOMAN'S SIZE = 12JT	8410015516017	SKIRT,WOMAN'S SIZE = 22WT	8410015520711
SKIRT,WOMAN'S SIZE = 12MP	8410015517449	SKIRT,WOMAN'S SIZE = 24MR	8410015519742
SKIRT,WOMAN'S SIZE = 12MR	8410015519259	SKIRT,WOMAN'S SIZE = 24MT	8410015520192
SKIRT,WOMAN'S SIZE = 12MT	8410015519886	SKIRT,WOMAN'S SIZE = 24WR	8410015520604
SKIRT,WOMAN'S SIZE = 12WP	8410015520286	SKIRT,WOMAN'S SIZE = 24WT	8410015520732
SKIRT,WOMAN'S SIZE = 12WR	8410015520381	SKIRT,WOMAN'S SIZE = 26MR	8410015519750
SKIRT,WOMAN'S SIZE = 12WT	8410015520661	SKIRT,WOMAN'S SIZE = 26MT	8410015520199
SKIRT,WOMAN'S SIZE = 14JP	8410015514619	SKIRT,WOMAN'S SIZE = 26WT	8410015520739
SKIRT,WOMAN'S SIZE = 14JR	8410015514723		
SKIRT,WOMAN'S SIZE = 14JT	8410015516053		
SKIRT,WOMAN'S SIZE = 14MP	8410015517455		
SKIRT,WOMAN'S SIZE = 14MR	8410015519264		
SKIRT,WOMAN'S SIZE = 14MT	8410015519896		
SKIRT,WOMAN'S SIZE = 14WP	8410015520291		

NSNs for Women's Shirt, Long Sleeve

SHIRT,WOMAN'S SIZE = 4XS	8410015559082	SHIRT,WOMAN'S SIZE = 20XXL	8410015559612
SHIRT,WOMAN'S SIZE = 4S	8410015559088	SHIRT,WOMAN'S SIZE = 22R	8410015559924
SHIRT,WOMAN'S SIZE = 4R	8410015559091	SHIRT,WOMAN'S SIZE = 22L	8410015559938
SHIRT,WOMAN'S SIZE = 4L	8410015559094	SHIRT,WOMAN'S SIZE = 22XL	8410015559947
SHIRT,WOMAN'S SIZE = 6XS	8410015559097	SHIRT,WOMAN'S SIZE = 22XXL	8410015559954
SHIRT,WOMAN'S SIZE = 6S	8410015559100	SHIRT,WOMAN'S SIZE = 24R	8410015559959
SHIRT,WOMAN'S SIZE = 6R	8410015559107	SHIRT,WOMAN'S SIZE = 24L	8410015559974
SHIRT,WOMAN'S SIZE = 6L	8410015559112	SHIRT,WOMAN'S SIZE = 24XL	8410015559980
SHIRT,WOMAN'S SIZE = 8XS	8410015559117	SHIRT,WOMAN'S SIZE = 24XXL	8410015559984
SHIRT,WOMAN'S SIZE = 8S	8410015559125	SHIRT,WOMAN'S SIZE = 26R	8410015559987
SHIRT,WOMAN'S SIZE = 8R	8410015559133	SHIRT,WOMAN'S SIZE = 26L	8410015559992
SHIRT,WOMAN'S SIZE = 8L	8410015559136	SHIRT,WOMAN'S SIZE = 26XL	8410015559994
SHIRT,WOMAN'S SIZE = 10XS	8410015559145	SHIRT,WOMAN'S SIZE = 26XXL	8410015560000
SHIRT,WOMAN'S SIZE = 10S	8410015559154		
SHIRT,WOMAN'S SIZE = 10R	8410015559178		
SHIRT,WOMAN'S SIZE = 10L	8410015559387		
SHIRT,WOMAN'S SIZE = 10XL	8410015559389		
SHIRT,WOMAN'S SIZE = 12S	8410015559391		
SHIRT,WOMAN'S SIZE = 12R	8410015559394		
SHIRT,WOMAN'S SIZE = 12L	8410015559398		
SHIRT,WOMAN'S SIZE = 12XL	8410015559404		
SHIRT,WOMAN'S SIZE = 12XXL	8410015559407		
SHIRT,WOMAN'S SIZE = 14S	8410015559422		
SHIRT,WOMAN'S SIZE = 14R	8410015559426		
SHIRT,WOMAN'S SIZE = 14L	8410015560028		
SHIRT,WOMAN'S SIZE = 14XL	8410015559435		
SHIRT,WOMAN'S SIZE = 14XXL	8410015559455		
SHIRT,WOMAN'S SIZE = 16S	8410015559462		
SHIRT,WOMAN'S SIZE = 16R	8410015559463		
SHIRT,WOMAN'S SIZE = 16L	8410015559470		
SHIRT,WOMAN'S SIZE = 16XL	8410015559499		
SHIRT,WOMAN'S SIZE = 16XXL	8410015559506		
SHIRT,WOMAN'S SIZE = 18S	8410015559510		
SHIRT,WOMAN'S SIZE = 18R	8410015559514		
SHIRT,WOMAN'S SIZE = 18L	8410015559520		
SHIRT,WOMAN'S SIZE = 18XL	8410015559525		
SHIRT,WOMAN'S SIZE = 18XXL	8410015559528		
SHIRT,WOMAN'S SIZE = 20S	8410015559533		
SHIRT,WOMAN'S SIZE = 20R	8410015559537		
SHIRT,WOMAN'S SIZE = 20L	8410015559543		
SHIRT,WOMAN'S SIZE = 20XL	8410015559549		

NSNs for Women's Shirt, Short Sleeve

SHIRT,WOMAN'S SIZE = 4R	8410015560054
SHIRT,WOMAN'S SIZE = 6R	8410015560056
SHIRT,WOMAN'S SIZE = 8R	8410015560059
SHIRT,WOMAN'S SIZE = 8L	8410015560063
SHIRT,WOMAN'S SIZE = 10R	8410015560070
SHIRT,WOMAN'S SIZE = 10L	8410015560075
SHIRT,WOMAN'S SIZE = 12R	8410015560080
SHIRT,WOMAN'S SIZE = 12L	8410015560083
SHIRT,WOMAN'S SIZE = 14R	8410015560087
SHIRT,WOMAN'S SIZE = 14L	8410015560090
SHIRT,WOMAN'S SIZE = 16R	8410015560095
SHIRT,WOMAN'S SIZE = 16L	8410015560100
SHIRT,WOMAN'S SIZE = 18R	8410015560110
SHIRT,WOMAN'S SIZE = 18L	8410015560117
SHIRT,WOMAN'S SIZE = 20R	8410015560122
SHIRT,WOMAN'S SIZE = 20L	8410015560134
SHIRT, WOMAN'S SIZE = 22R	8410015793671
SHIRT,WOMAN'S SIZE = 22L	8410015560141
SHIRT, WOMAN'S, SIZE =24R	8410015793675
SHIRT,WOMAN'S SIZE = 24L	8410015560151
SHIRT, WOMAN'S, SIZE =26R	8410015793680
SHIRT,WOMAN'S SIZE = 26L	8410015560161

NSNs for Women's All-Weather Coats

SIZE 6S	8410-01-308-8649
SIZE 6R	8410-01-308-8650
SIZE 6L	8410-01-308-8651
SIZE 8S	8410-01-308-8652
SIZE 8R	8410-01-308-8653
SIZE 8L	8410-01-308-8654
SIZE 10S	8410-01-308-8655
SIZE 10R	8410-01-308-8656
SIZE 10L	8410-01-308-8657
SIZE 12S	8410-01-308-8658
SIZE 12R	8410-01-308-8659
SIZE 12L	8410-01-308-8660
SIZE 14S	8410-01-308-8661
SIZE 14R	8410-01-308-8662
SIZE 14L	8410-01-308-8663
SIZE 16S	8410-01-308-8664
SIZE 16R	8410-01-308-8665
SIZE 16L	8410-01-308-8666
SIZE 18S	8410-01-308-8667
SIZE 18R	8410-01-308-8668
SIZE 18L	8410-01-308-8669
SIZE 20S	8410-01-308-8670
SIZE 20R	8410-01-308-8671
SIZE 20L	8410-01-308-8672
SIZE 22R	8410-01-400-6129
SIZE 24R	8410-01-454-0104
SIZE 26R	8410-01-454-0108
SIZE 16XL	8410-01-474-3499
SIZE 18XL	8410-01-474-3506
SIZE 20XL	8410-01-474-3508
SIZE 22XL	8410-01-474-3510
SIZE 22L	8410-01-474-3521
SIZE 12XL	8410-01-527-3782
SIZE 14XL	8410-01-527-3787

APPENDIX D

SUGGESTED SOURCES

FOR COMPONENTS

OF ASU

The following are suggested sources for Various Components of the Army Service Uniform (ASU):

Thread : A-A-50199 ; Polyester Core, Cotton- or Polyester-Covered. For seaming and stitching - Tex Size 36-45, 2 or 3 ply and for overedging - Tex Size 31-35, 2 ply

- a. For attachment of goldenlight braid (Close Match to Goldenlight):
Volunteer Thread Company, 480 McNally Drive, Nashville, TN 37211, Telephone 800-888-9959, Item No. Wilson Gold (97V23)
Hammer Brothers, Inc., 407 Grand Boulevard, Kansas City, MO 64106, Telephone 800-321-2351, Item No. Gold 8084504815
A&E Inc., Ms. Sherry Smith, Telephone 800-223-8872, Item No. CA #66051 Goldenlight AJ
- b. For alterations/hemming of trousers and slacks (Close Match to Army Blue 451):
Volunteer Thread Company, 480 McNally Drive, Nashville, TN 37211, Telephone 800-888-9959, Item No. AE2025 99V13, Spec 50
A&E Inc., Ms. Sherry Smith, Telephone 800-223-8872, Item No. CA #66045, Blue AC
- c. For alterations/hemming of coats and skirt (Close Match to Army Blue 450):
Black thread maybe used for any alterations/hemming to the coats and skirt.

Braid: The ornamental braid shall be 1-1/2 inch wide for men and 1 inch wide for female woven lace, vellum conforming to Type II, Class 1, Style B of MIL-B- 13466. The following are potential sources for the braid:

Bende & Sons, 180 – 192 Autumn Street, Passaic, NJ 07055, POC: Ms. Rene Rioux (973) 777-8700
ELC Industries, 56 Bethpage Drive, Hicksville, NY 11801, POC: David or Andy Ludmar (516) 932-6900
Grip Flex, 2245 East Ontario Street, Philadelphia, PA 19134, POC: Mike Lowney (215) 743-7492
Vanguard, 1172 Azalea Garden Rd., Norfolk, VA 23502, POC: Janice Pacheco (800) 221-1264

Soutache: The sleeve ornamentation braid shall be a 1/8 inch wide soutache braid, goldenlite color nylon conforming to Type I, Class 1 of MIL-B-13466. The following are potential sources for the braid:

Bende & Sons, 180 – 192 Autumn Street, Passaic, NJ 07055, POC: Ms. Rene Rioux - (973) 777-8700
ELC Industries, 56 Bethpage Drive, Hicksville, NY 11801, POC: David or Andy Ludmar - (516) 932-6900
Grip Flex, 2245 East Ontario Street, Philadelphia, PA 19134, POC: Mike Lowney - (215) 743-7492

Cloth , Uniform Fabric: MIL-DTL-823, Cloth, Polyester/Wool Serge, Army Blue 450 and Army Blue 451

Burlington Industries, Mr. Ashley Bullock, 804 Green Valley Road, Suite 300, Greensboro, NC 27408, Telephone (336) 379-2131. Army Blue 450 – NSN 8305-01-548-2905 and Army Blue 451 – NSN 8305-01-548-2911

Cloth, Shirts: GL/PD 08-01 - Cloth, Polyester/Cotton, White 521. The following are potential source for the fabric:

Milliken & Co, 920 Milliken Rd, M147, Spartanburg, SC 29303, POC David Eskew - (864) 503-1378
Springfield, LLC, 30 Jericho Executive Plaza, Suite 500E, Jericho, NY 11753, POC: Doug Brown - (917) 421-6012
Swift Galey, 670 N. Main Street, Society Hill, SC 29593, POC: Richard Whiteman - (215) 369-8282